

FREEHOLD



House (EPC Rating: B)

I DHANI CLOSE, ROMFORD, RM5 3BH

Prices from

£550,000

Green Lane Residential

Your personal estate agents with over 50 years experience



4



2



1



B

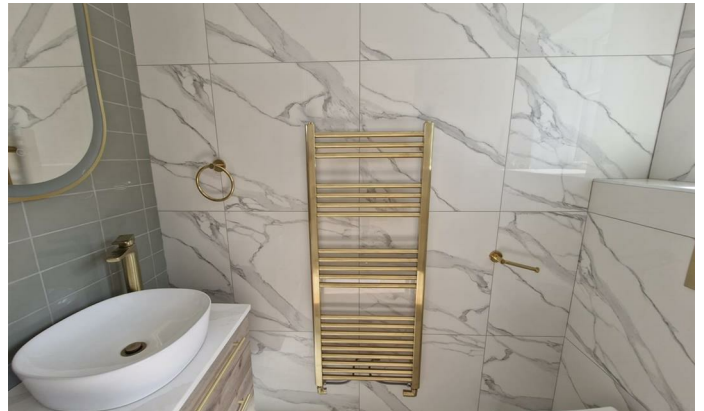
4 Bedroom House located in Romford

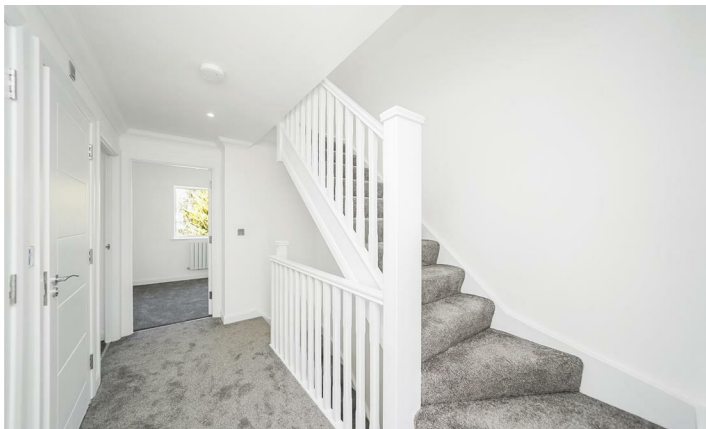
As the exclusive agent, Green Lane Residential is delighted to offer the FINAL REMAINING semi-detached home in this exceptional new development - an exclusive collection of five newly built properties set on a private road just a short distance from Romford Town Centre.

This high-quality, intimate development comprises one detached property and four semi-detached, halls-adjoining homes - **THREE OF WHICH ARE ALREADY RESERVED** - each thoughtfully arranged over three floors and offering approximately 1,200 sq ft (120 sq meters) of well-designed living space. The homes feature four bedrooms, two bathrooms, a spacious open-plan living area on the ground floor, and allocated parking.

This is the latest project by a well-established development company renowned for delivering high-quality homes throughout East London and Essex.

Don't miss this rare opportunity to secure the final semi-detached home in this sought-after development.

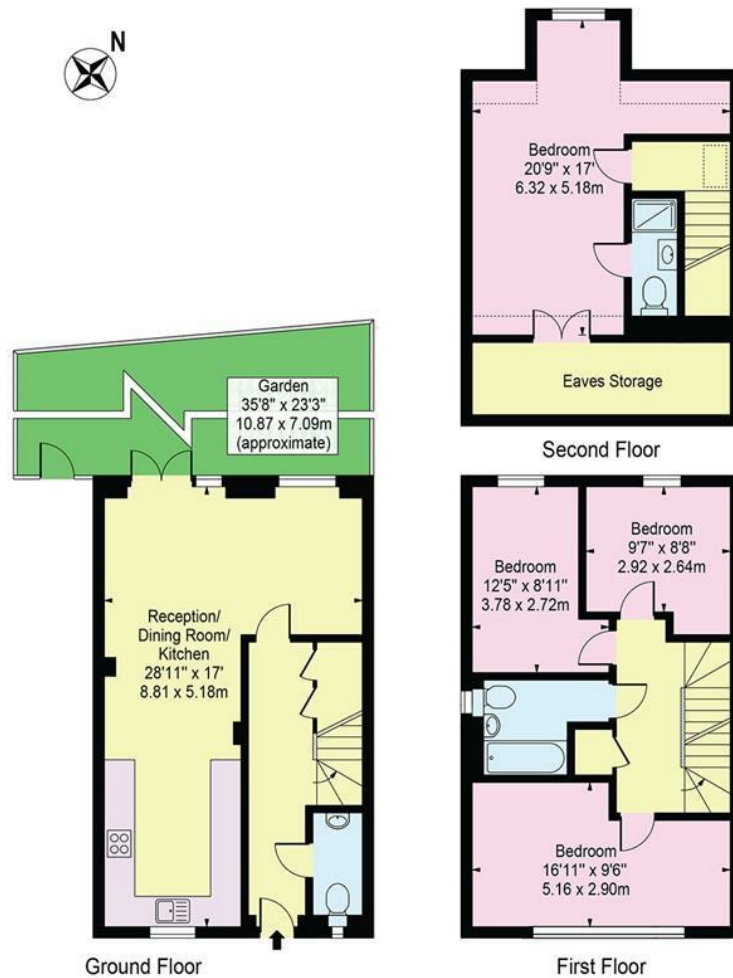




Dhani Close, RM5 3BH

Approx. Total Internal Area 1368 Sq Ft - 127.09 Sq M
(Including Eaves Storage & Restricted Height Area)

Approx. Gross Internal Area 1240 Sq Ft - 115.20 Sq M
(Excluding Eaves Storage & Restricted Height Area)



For Illustration Purposes Only - Not To Scale

This floor plan should be used as a general outline for guidance only and does not constitute in whole or in part an offer or contract.
Any intending purchaser or lessee should satisfy themselves by inspection, searches, enquiries and full survey as to the correctness of each statement.
Any areas, measurements or distances quoted are approximate and should not be used to value a property or be the basis of any sale or let.

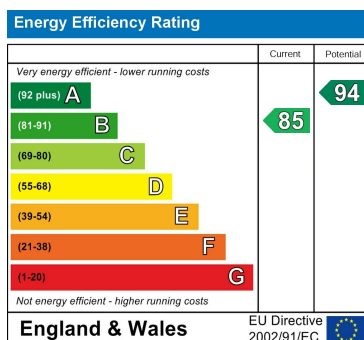
Council Tax Band

Call us on

02081293838

admin@greenlaneresidential.co.uk
greenlaneresidential.co.uk

Energy Performance Graph



Agents Note: Whilst every care has been taken to prepare these particulars, they are for guidance purposes only. All measurements are approximate and are for general guidance purposes only and whilst every care has been taken to ensure their accuracy, they should not be relied upon and potential buyers are advised to recheck the measurements.

Green Lane Residential

Your personal estate agents with over 50 years experience