

2 Hackington Cottage, St Stephens Hill, Canterbury, Kent, CT2 7AT

£1,215 PCM

- STUDENT HOUSE
- WIFI ENABLED
- 1 BEDROOMS
- 1 RECEPTION ROOMS
- NO PARKING AVAILABLE
- BILLS INCLUDED
- NO PETS ALLOWED
- DOUBLE BEDS
- 1 BATHROOMS
- SHARED GARDEN

2 Hackington Cottage, Canterbury CT2 7AT

STUDENT PROPERTY 2026/2027 - BILLS INCLUDED (Excluding Council tax for professional tenants).

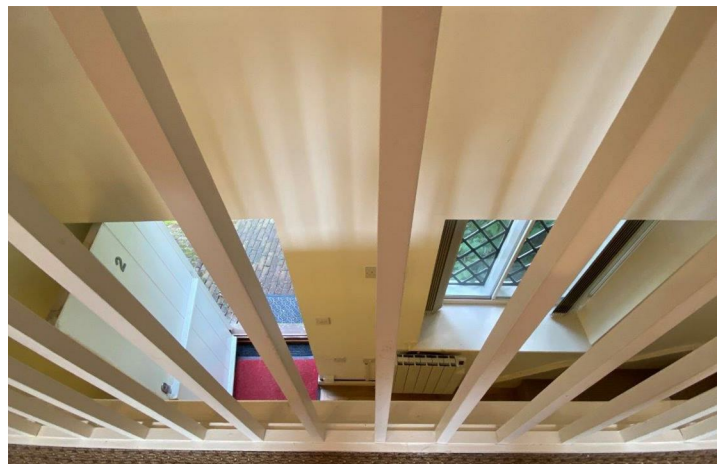
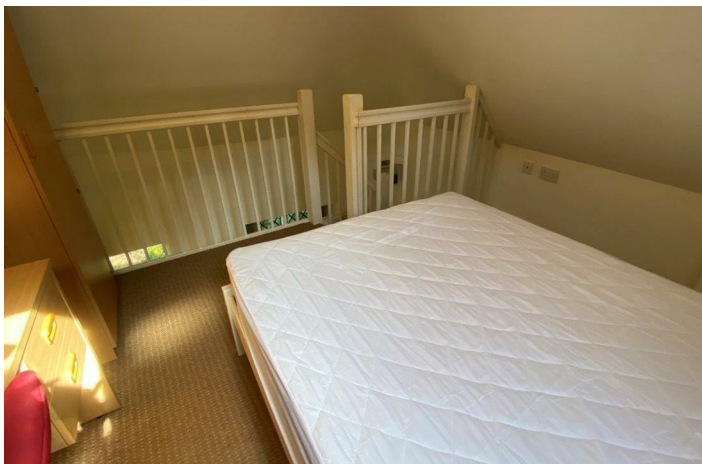
If you are looking for a comfortable, well appointed cottage, then this is the place for you! This lovely cottage is set in a quiet courtyard location just a short walk from the University of Kent. The accommodation provides a lounge with a modern well fitted kitchen area, a shower room and a light airy double bedroom on the mezzanine floor under the eaves. The property benefits from electric heating and a shared garden to the front. There are frequent bus services running to and from the City centre which is a comfortable walk away. Please note, this property does have low ceilings.

See our online video tour.

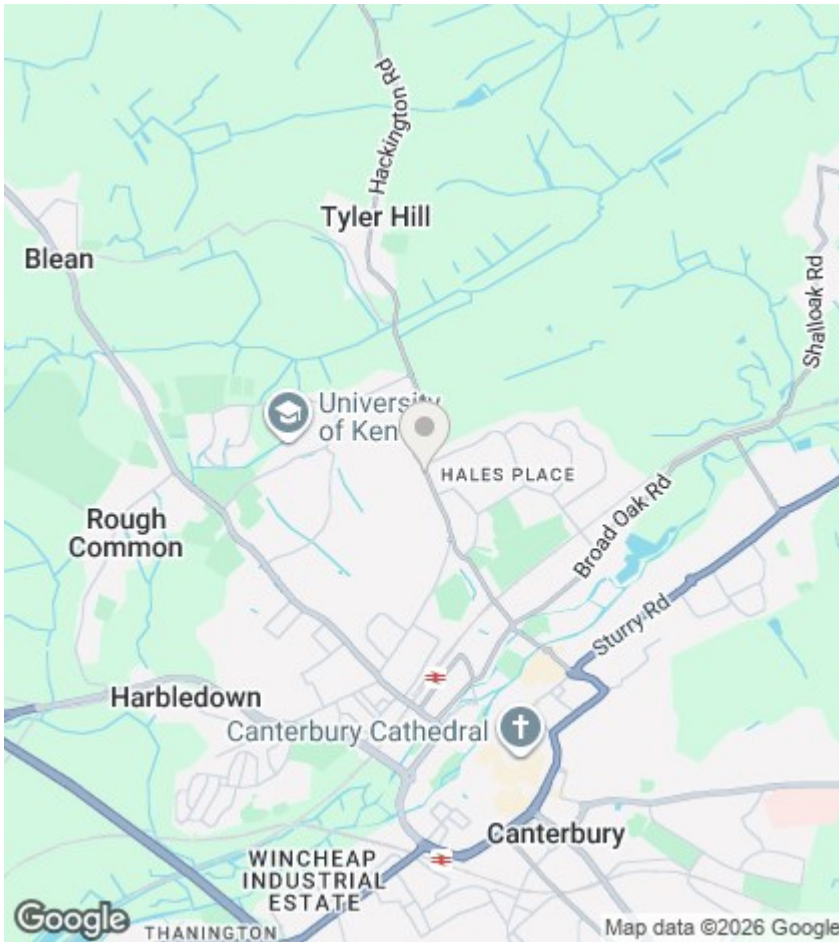
Council Tax band is A.



Council Tax Band: A







Directions

Viewings

Viewings by arrangement only. Call 01227788088 to make an appointment.

EPC Rating:

D

| Energy Efficiency Rating | | Current | Potential |
|---|--|----------------------------|-----------|
| Very energy efficient - lower running costs | | | |
| (92 plus) A | | | 99 |
| (81-91) B | | | |
| (69-80) C | | | |
| (55-68) D | | 63 | |
| (39-54) E | | | |
| (21-38) F | | | |
| (1-20) G | | | |
| Not energy efficient - higher running costs | | | |
| England & Wales | | EU Directive 2002/91/EC | |

Ground Floor



First Floor

