



17 Queningate Court, Havelock Street, Canterbury, Kent, CT1 1HB

£980 PCM

- 1 BEDROOMS
- WIFI ENABLED
- DOUBLE BEDS
- 1 BATHROOMS
- NO PARKING AVAILABLE
- STUDENT FLAT
- CLOSE TO CHRIST CHURCH UNIVERSITY
- 1 RECEPTION ROOMS
- FURNISHED PROPERTY
- SHARED GARDEN

17 Queningate Court, Canterbury CT1 1HB

STUDENTS & PROFESSIONALS WELCOME! 2025/2026 - WIFI INCLUDED.

This modern furnished studio apartment is exclusively available to students. Queningate Court in Havelock Street is a short walk from Christchurch University and from the bus station and city Centre. Designed with students in mind the property is equipped with full fibre broadband, numerous USB sockets, double bed, wardrobe, desk and chair. The kitchen is fitted with a fridge freezer, 4 ring hob, electric oven, microwave, washer dryer and dishwasher. The bathroom is fitted with a generous shower, wash hand basin and toilet. An extra feature of this apartment is the mezzanine snug. No Parking available on site.

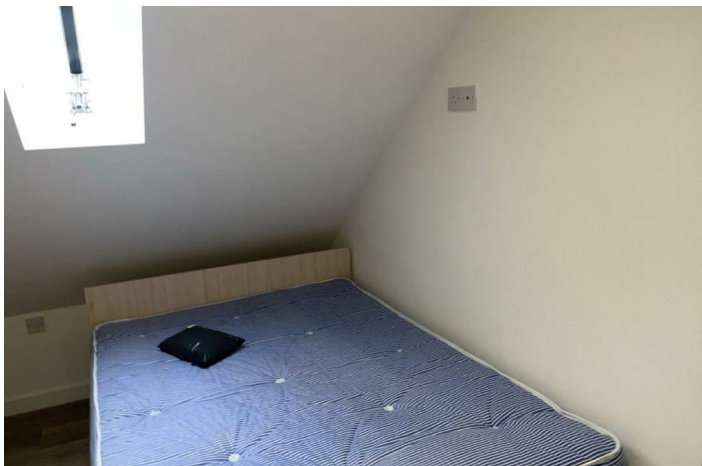
* Bills package can be available if required (subject to full occupancy and being let on a 12 month tenancy)

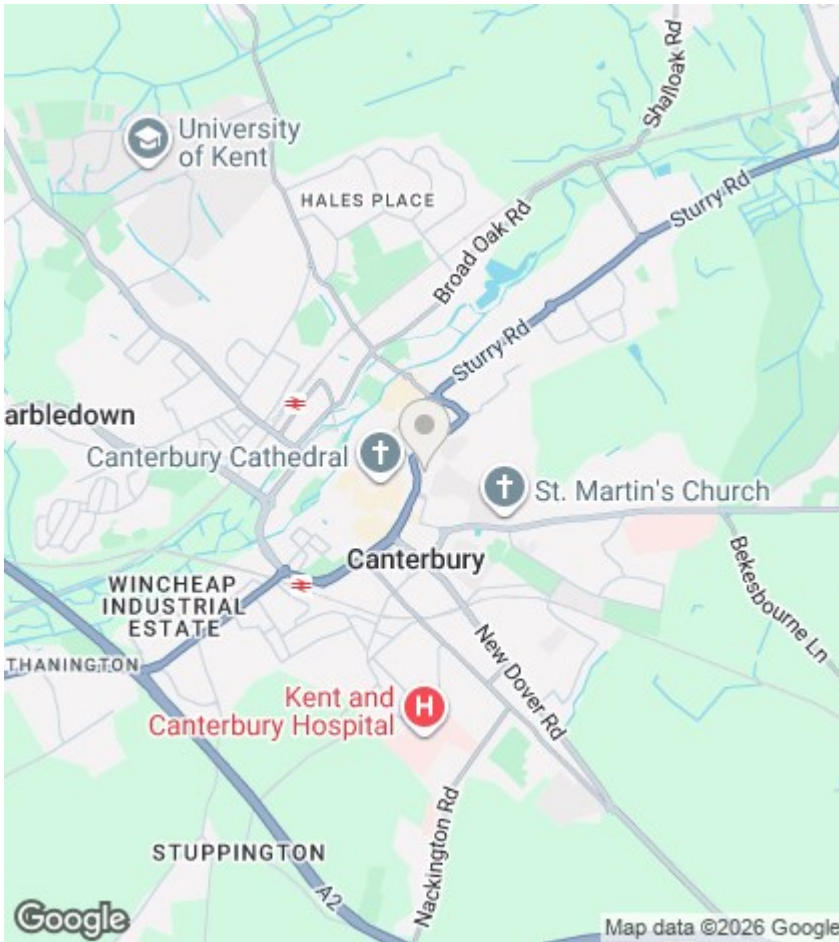
Contact us now to arrange a viewing.

Council Tax Band for property is - A



Council Tax Band: A





Directions

Viewings

Viewings by arrangement only. Call 01227 788088 to make an appointment.

EPC Rating:

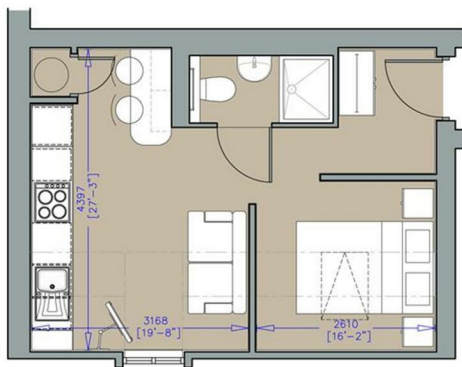
C

| Energy Efficiency Rating | | Current | Potential |
|---|--|-------------------------|-----------|
| Very energy efficient - lower running costs | | | |
| (92 plus) A | | | |
| (81-91) B | | | |
| (69-80) C | | 71 | 71 |
| (55-68) D | | | |
| (39-54) E | | | |
| (21-38) F | | | |
| (1-20) G | | | |
| Not energy efficient - higher running costs | | | |
| England & Wales | | EU Directive 2002/91/EC | |

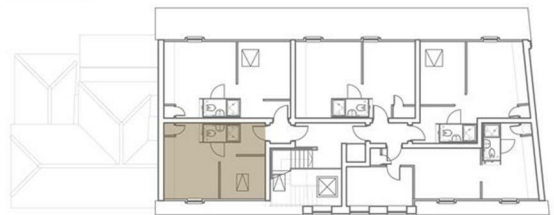
QUENINGATE COURT

HAVELOCK STREET CANTERBURY

17.



KEY



SECOND FLOOR

