

14 Queningate Mews, Havelock Street, Canterbury, Kent, CT1 1GU

£960 PCM

- WIFI ENABLED
- CLOSE TO CHRIST CHURCH & CITY CENTRE
- 1 BEDROOMS
- 1 BATHROOMS
- COUPLES WELCOME
- STUDENT STUDIO
- DOUBLE BEDS
- 1 RECEPTION ROOMS
- FURNISHED PROPERTY
- COURTYARD GARDEN

14 Queningate Mews, Canterbury CT1 1GU

STUDENT PROPERTY AVAILABLE FOR 2026/2027 - WIFI INCLUDED.

Fully furnished, modern, stylish, apartment exclusively available to students. Queningate Mews in Havelock Street is a minutes' walk from Christchurch University & 5 minutes' walk from the bus station & City Centre. Designed with students in mind the property is equipped with full fibre broadband, numerous USB sockets, double bed, wardrobe, desk and chair. The kitchen is supplied with fridge freezer, hob, electric oven, microwave, and washer dryer. The bathroom is fitted with a generous shower, wash hand basin and toilet.

Please contact us to arrange a viewing.

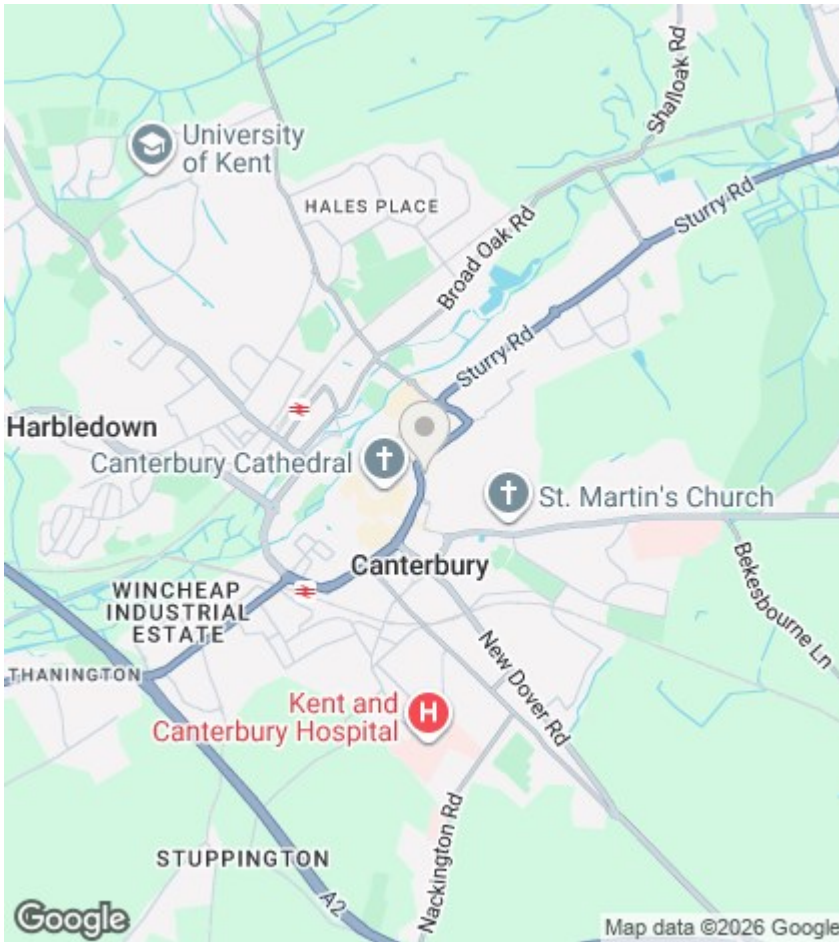
*Bills package available subject to a 12 month tenancy.

Council Tax Band for property is - A



Council Tax Band: A





Directions

Viewings

Viewings by arrangement only. Call 01227788088 to make an appointment.

EPC Rating:

B

Energy Efficiency Rating		Current	Potential
Very energy efficient - lower running costs			
(92 plus) A			
(81-91) B		82	82
(69-80) C			
(55-68) D			
(39-54) E			
(21-38) F			
(1-20) G			
Not energy efficient - higher running costs			
England & Wales		EU Directive 2002/91/EC	

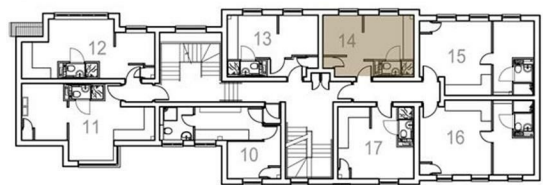
QUENINGATE MEWS

HAVELOCK STREET CANTERBURY

14.



KEY



FIRST FLOOR

