



12 Queningate Mews, Havelock Street, Canterbury, Kent, CT1 1GU

£875 PCM

- WIFI ENABLED
- CLOSE TO CHRIST CHURCH & CITY CENTRE
- DOUBLE BEDS
- 1 BATHROOMS
- COUPLES WELCOME
- STUDENT STUDIO
- 1 BEDROOMS
- 1 RECEPTION ROOMS
- FURNISHED PROPERTY
- BILLS PACKAGE AVAILABLE

12 Queningate Mews, Canterbury CT1 1GU

STUDENTS & PROFESSIONALS WELCOME- AVAILABLE 2026 / 2027 - WIFI INCLUDED.

This stylish apartment is available to students & professionals. Queningate Mews in Havelock Street is a minutes' walk from Christchurch University and a short walk from the bus station & city centre. Tucked away in a quiet location within the development, this is the perfect apartment to choose. Designed with convenience in mind the property is equipped with full fibre broadband and numerous USB sockets and furnished with a double bed with storage under, wardrobe, desk and chair. The kitchen is supplied with a fridge freezer, 2 ring hob, electric oven, microwave, and washer dryer. The bathroom is fitted with a generous shower, wash hand basin and toilet. No Parking available.

Bills package available on request. (Based on Single occupancy for a 12 month Tenancy)

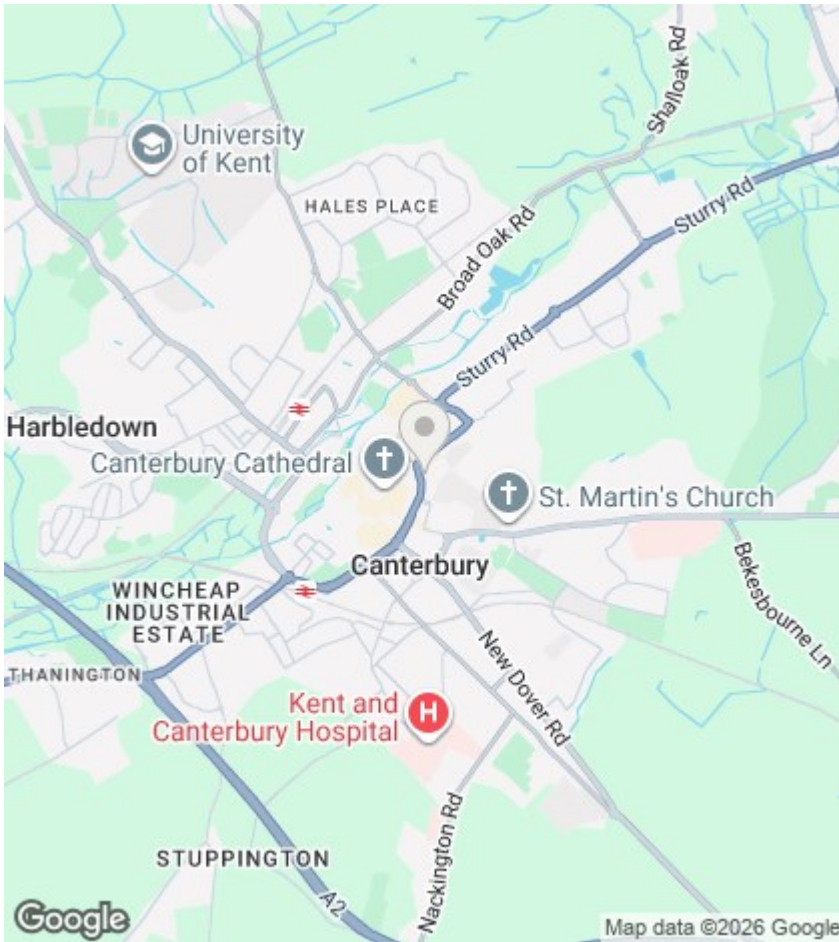
Contact us to arrange a viewing.

Council Tax Band for property is - Band A



Council Tax Band: A





Directions

Viewings

Viewings by arrangement only. Call 01227 788088 to make an appointment.

EPC Rating:

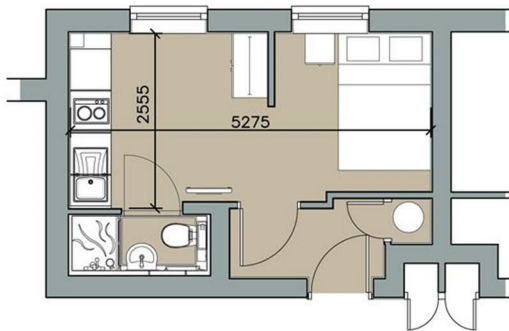
B

Energy Efficiency Rating		Current	Potential
Very energy efficient - lower running costs			
(92 plus) A			
(81-91) B		82	82
(69-80) C			
(55-68) D			
(39-54) E			
(21-38) F			
(1-20) G			
Not energy efficient - higher running costs			
England & Wales		EU Directive 2002/91/EC	

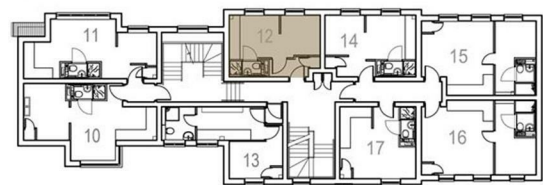
QUENINGATE MEWS

HAVELOCK STREET CANTERBURY

12.



KEY



FIRST FLOOR

