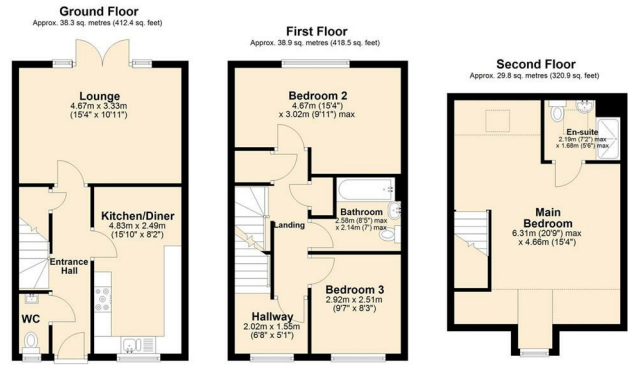




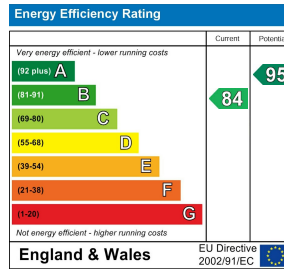
3 | Primrose Close | Cringleford | NR4 7WP

£1,600 Per month

 **BUTTERFLY**   
SALES, LETTINGS & PROPERTY MANAGEMENT



Every effort has been made to ensure the accuracy of the floorplan provided. However, measurements of doors, windows, rooms, and other items are approximate, and no responsibility is accepted for any errors, omissions, or inaccuracies. This floorplan is for illustrative purposes only and should be used as such by prospective tenants. The services, systems, and appliances depicted have not been tested, and no guarantee is made regarding their functionality or efficiency. Plan produced using PlanUp.



## Description

A modern three storey, three bedroom semi detached townhouse located on the popular Round House Park development. The property offers a spacious kitchen/diner, lounge with garden access, and a top floor master suite with en-suite.

Outside, the property offers a private driveway providing off-road parking and access to a garage with light and power. The enclosed rear garden is attractively landscaped in an L-shape, featuring a lawn, patio area and established shrub borders.

Ideally situated for the NNUH, UEA, Norwich Research Park, local schools and excellent road links.

## Key features

- Modern 3 bedroom semi detached townhouse set over 3 storeys
- Lounge with double doors opening onto the rear garden
- Ground floor WC, first floor family bathroom, plus en-suite to master
- Landscaped, enclosed rear garden with lawn, patio and mature shrub borders
- Ideally located for NNUH, UEA, Norwich Research Park & major road links
- Spacious kitchen/diner with integrated appliances
- Three bedrooms arranged over two floors
- Garage with light and power, plus private driveway parking
- Gas central heating and double glazing throughout
- Available May 2026

Council Tax Band & Local Authority: C, South Norfolk  
Deposit Required: £1,846

You can also scan the QR code to view the property online. This will take you directly to our website, where you'll find additional photos, detailed floorplan, and all the key information in line with Parts A, B, and C of the Material Information guidance for property listings. You'll also be able to browse our other available properties there.



Butterfly Lettings | 6 Church Lane | Eaton | NR4 6NZ  
hello@butterflylettings.co.uk  
www.butterflylettings.co.uk  
**01603 870870**



Butterfly Lettings, trading as Butterfly Homes, and its representatives are not authorised to make statements or assurances about the property, whether on their own behalf or on behalf of the client. No responsibility is accepted for any statements contained in these particulars, which do not form part of any offer or contract. We have taken care to ensure that the details provided for each property are accurate at the time of listing. However, the information supplied is intended as a guide only, and we do not obtain confirmation from the seller's legal representative when preparing it. Buyers should verify any leasehold details, charges, or other matters through their own legal representatives. All measurements, areas, and distances are approximate. Fixtures, fittings, and appliances have not been tested, so we cannot guarantee that they are in working order. It should not be assumed that the property has all necessary planning permissions, building regulations, or other consents. We recommend checking the local council's website for information on conservation areas, flood risks, tree preservation orders, planning applications, and other relevant matters. We also advise reviewing the property and surrounding area using Google Maps or Street View before attending a viewing. Photographs are for illustration only and should not be taken as confirmation that any items shown are included in the sale. If any particular detail is important to you, please seek independent professional verification before proceeding. Referral Fees: Butterfly Homes may receive a referral fee from recommended solicitors, mortgage advisers, or other service providers. Any referral arrangement will not affect the cost or quality of the service provided.

We are Butterfly Lettings LTD trading as Butterfly Homes with registered number 15893663 and address C/O Shaw & Co 3 Colegate Norwich Norfolk NR3 1BN