

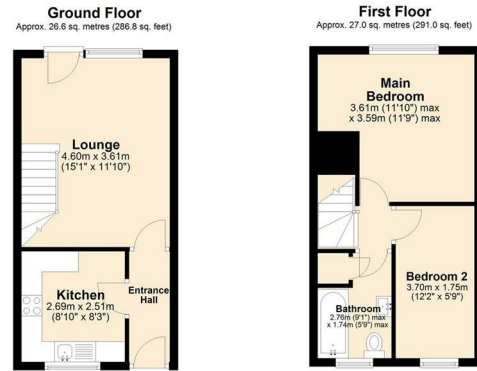


10 | Lavender Court | Thetford | IP24 2DF

£1,100 PCM

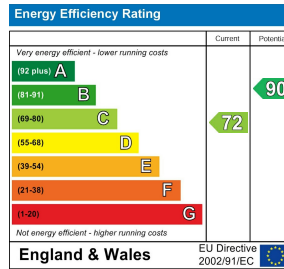






Total area: approx. 53.7 sq. metres (577.8 sq. feet)

Every effort has been made to ensure the accuracy of the floorplan provided. However, measurements of doors, windows, rooms, and other items are approximate, and no responsibility is accepted for any errors, omissions, or inaccuracies. This floorplan is for illustrative purposes only and should be used as such by prospective tenants. The services, systems, and appliances depicted have not been tested, and no guarantee is made regarding their functionality or efficiency. Plans produced using PlanIt.



## Description

Recently refurbished two bedroom mid terrace home located within the popular Cloverfield development. The property features an entrance hall, a well proportioned kitchen with space for a fridge freezer and washing machine, along with a 15' rear facing lounge offering direct access to the enclosed rear garden. Upstairs, there are two bedrooms and a modern family bathroom fitted with a shower over the bath. Additional benefits include driveway parking, a single garage, gas central heating, double glazing, and the property is available now.

## Key features

- Recently refurbished two bedroom mid terrace home
- 15' Rear facing lounge with direct access to the garden
- Modern family bathroom with shower over the bath
- Garage and driveway parking
- Located within the popular Cloverfield development
- Entrance hall and spacious kitchen
- Two bedrooms arranged over the first floor
- Enclosed rear garden, with patio area
- Double glazed & gas central heating
- Available early January 2026

Council Tax Band & Local Authority: A, Breckland  
Deposit Required: £1,269

You can also scan the QR code to view the property online. This will take you directly to our website, where you'll find additional photos, detailed floorplan, and all the key information in line with Parts A, B, and C of the Material Information guidance for property listings. You'll also be able to browse our other available properties there.



Butterfly Lettings | 6 Church Lane | Eaton | NR4 6NZ  
hello@butterflylettings.co.uk  
www.butterflylettings.co.uk  
**01603 870870**



Butterfly Lettings, trading as Butterfly Homes, and its representatives are not authorised to make statements or assurances about the property, whether on their own behalf or on behalf of the client. No responsibility is accepted for any statements contained in these particulars, which do not form part of any offer or contract. We have taken care to ensure that the details provided for each property are accurate at the time of listing. However, the information supplied is intended as a guide only, and we do not obtain confirmation from the seller's legal representative when preparing it. Buyers should verify any leasehold details, charges, or other matters through their own legal representatives. All measurements, areas, and distances are approximate. Fixtures, fittings, and appliances have not been tested, so we cannot guarantee that they are in working order. It should not be assumed that the property has all necessary planning permissions, building regulations, or other consents. We recommend checking the local council's website for information on conservation areas, flood risks, tree preservation orders, planning applications, and other relevant matters. We also advise reviewing the property and surrounding area using Google Maps or Street View before attending a viewing. Photographs are for illustration only and should not be taken as confirmation that any items shown are included in the sale. If any particular detail is important to you, please seek independent professional verification before proceeding. Referral Fees: Butterfly Homes may receive a referral fee from recommended solicitors, mortgage advisers, or other service providers. Any referral arrangement will not affect the cost or quality of the service provided.

We are Butterfly Lettings LTD trading as Butterfly Homes with registered number 15893663 and address C/O Shaw & Co 3 Colegate Norwich Norfolk NR3 1BN