

24 Campus Martius
Heddon-On-The-Wall
Newcastle Upon Tyne
NE15 0BP

Offers Over
£325,000



24 Campus Martius
Heddon-On-The-Wall
Newcastle Upon Tyne
NE15 0BP

- 2 Bedrooms
- Beautiful Gardens
- Kitchen
- Rear Lobby/Utility
- Wonderful Views

- Detached Bungalow
- Spacious Living Room
- Bathroom
- Garage
- No Onward Chain



2



1



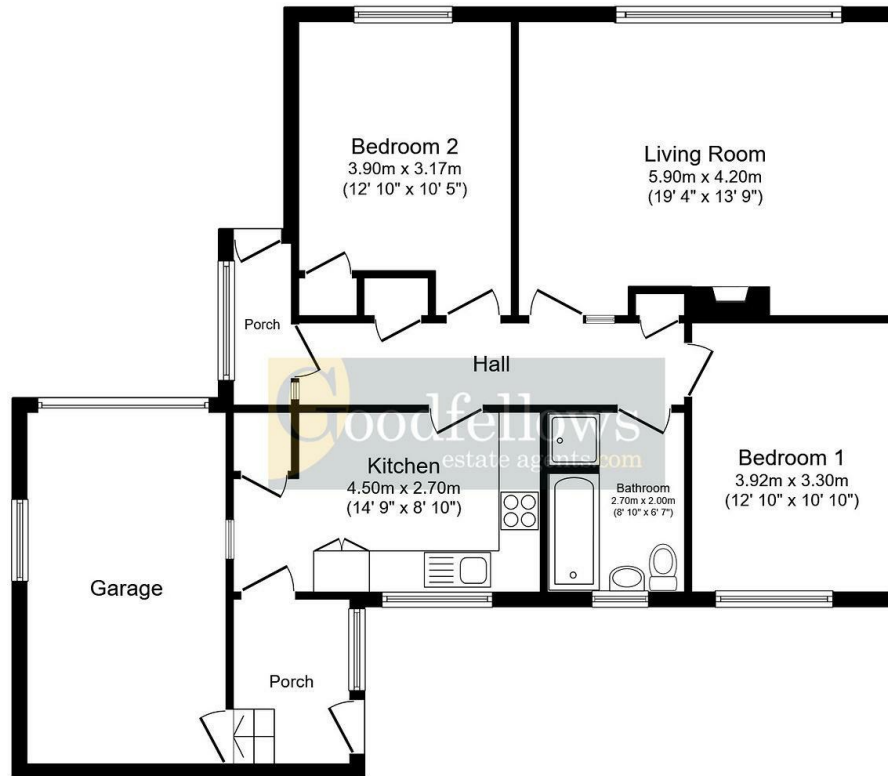
1



D







Floor Plan
 Floor area 96.1 sq.m. (1,034 sq.ft.)

Total floor area: 96.1 sq.m. (1,034 sq.ft.)

This floor plan is for illustrative purposes only. It is not drawn to scale. Any measurements, floor areas (including any total floor area), openings and orientations are approximate. No details are guaranteed, they cannot be relied upon for any purpose and do not form any part of any agreement. No liability is taken for any error, omission or misstatement. A party must rely upon its own inspection(s).



EPC Rating: D
Council Tax Band: D

Whilst every care has been taken to prepare these particulars, they are for guidance purposes only. All measurements are approximate and whilst every care has been taken to ensure their accuracy, they should not be relied upon and potential buyers/tenants are advised to recheck the measurements. The agent has not tested any equipment, services, fixtures or fittings and makes no representation regarding their condition.

CONTACT

11 West Road, Ponteland,
 Northumberland, NE20 9SU

E: ponteland@goodfellowsestateagents.com
 T: 01661 829164

