

21 Pont View  
Ponteland  
Newcastle upon Tyne  
NE209UZ

£325,000

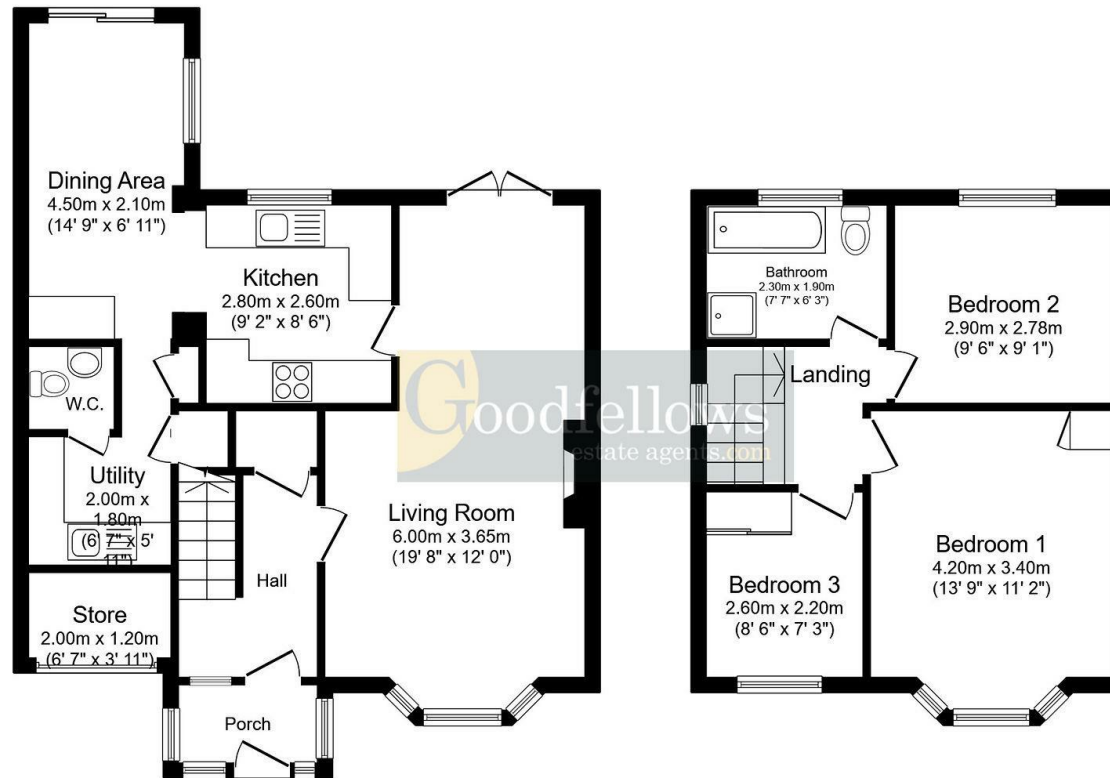


21 Pont View  
Ponteland  
Newcastle upon Tyne  
NE209UZ

- 3 Bedrooms
- Views over Countryside
- Kitchen / Breakfast Room
- Modern Bathroom
- No Chain
- Recently Updated
- Living / Dining Room
- Utility and Cloaks WC
- Popular Location







**Ground Floor**

Floor area 59.7 sq.m. (643 sq.ft.)

**First Floor**

Floor area 38.5 sq.m. (414 sq.ft.)

**Total floor area: 98.2 sq.m. (1,057 sq.ft.)**

This floor plan is for illustrative purposes only. It is not drawn to scale. Any measurements, floor areas (including any total floor area), openings and orientations are approximate. No details are guaranteed, they cannot be relied upon for any purpose and do not form any part of any agreement. No liability is taken for any error, omission or misstatement. A party must rely upon its own inspection(s).



**EPC Rating: D**  
**Council Tax Band: D**

Whilst every care has been taken to prepare these particulars, they are for guidance purposes only. All measurements are approximate and whilst every care has been taken to ensure their accuracy, they should not be relied upon and potential buyers/tenants are advised to recheck the measurements. The agent has not tested any equipment, services, fixtures or fittings and makes no representation regarding their condition.

**CONTACT**

11 West Road, Ponteland,  
 Northumberland, NE20 9SU

E: [ponteland@goodfellowsestateagents.com](mailto:ponteland@goodfellowsestateagents.com)  
 T: 01661 829164

