

39 Beech Court
Darras Hall
Ponteland
NE20 9NE

Price
£700,000



39 Beech Court
Darras Hall
Ponteland
NE20 9NE

- 4 Bedrooms
- Breakfasting Kitchen
- Study or Ground Floor Fifth Bedroom
- Cloaks WC
- Bathroom WC
- Living/Dining Room
- Conservatory
- Dining Room
- En-suite Shower Room WC
- Garage



4



2

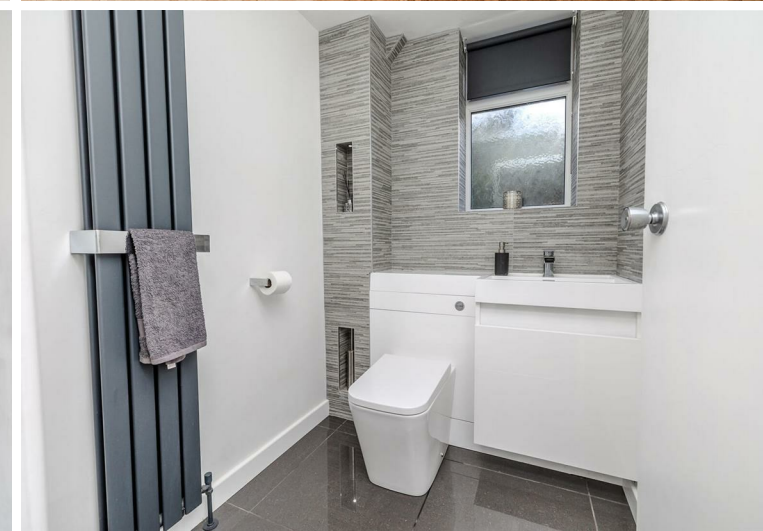
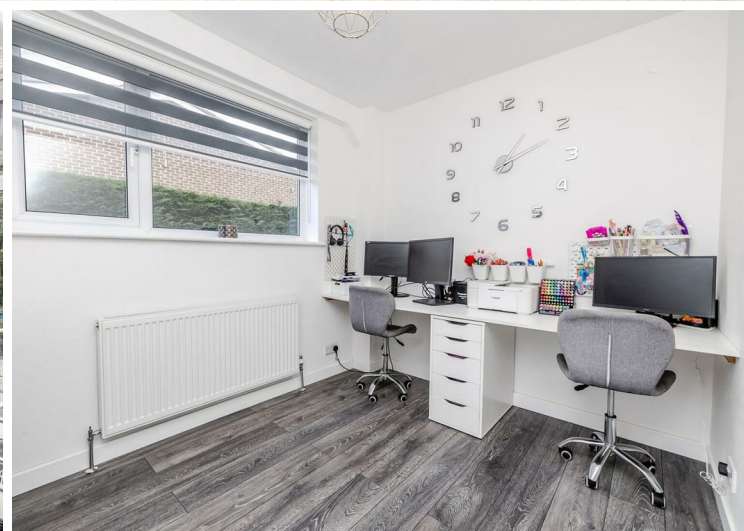


4



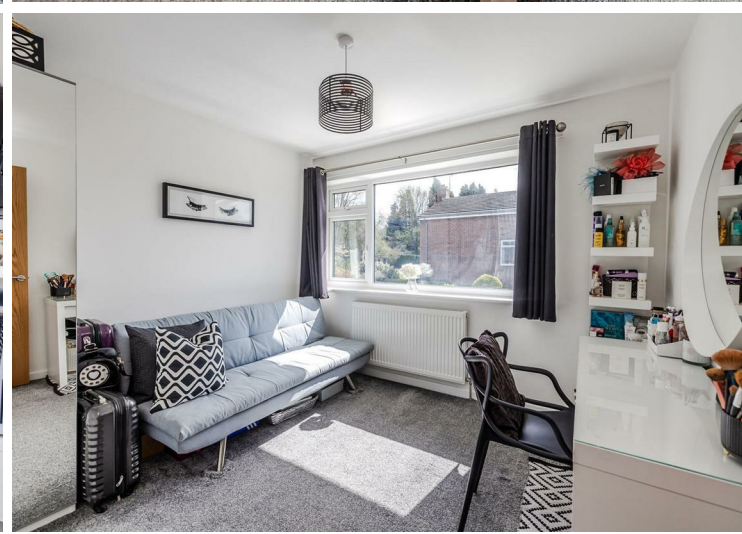
D







39 Beech Court, Darras Hall, Ponteland, NE20 9NE





Total floor area: 198.6 sq.m. (2,137 sq.ft.)

This floor plan is for illustrative purposes only. It is not drawn to scale. Any measurements, floor areas (including any total floor area), openings and orientations are approximate. No details are guaranteed, they cannot be relied upon for any purpose and do not form any part of any agreement. No liability is taken for any error, omission or misstatement. A party must rely upon its own inspection(s).



EPC Rating: D
Council Tax Band: F

Whilst every care has been taken to prepare these particulars, they are for guidance purposes only. All measurements are approximate and whilst every care has been taken to ensure their accuracy, they should not be relied upon and potential buyers/tenants are advised to recheck the measurements. The agent has not tested any equipment, services, fixtures or fittings and makes no representation regarding their condition.

CONTACT

11 West Road, Ponteland,
 Northumberland, NE20 9SU

E: ponteland@goodfellowsestateagents.com
 T: 01661 829164

