

12 Hamlet Court  
Woodlands Manor  
Medburn  
Newcastle Upon Tyne  
NE200DQ

Asking Price  
£750,000



5  4   
2  C 

12 Hamlet Court  
Woodlands Manor  
Medburn  
Newcastle Upon Tyne  
NE200DQ

- 5 spacious bedrooms
- 2 Reception rooms
- Open plan Kitchen/Dining/Family Room
- Open views to the rear
- South Facing Rear Garden
- 4 modern bathrooms
- High spec interior design
- Detached house, built 2022
- Immaculate condition
- Viewing recommended



5



4

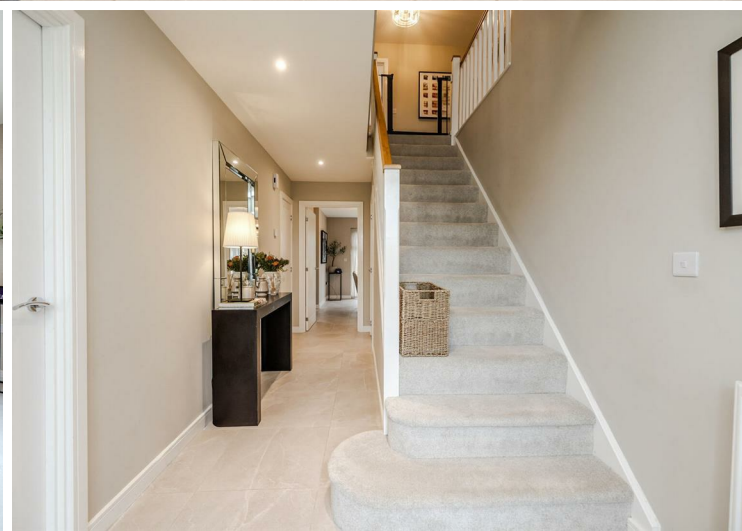


2



C

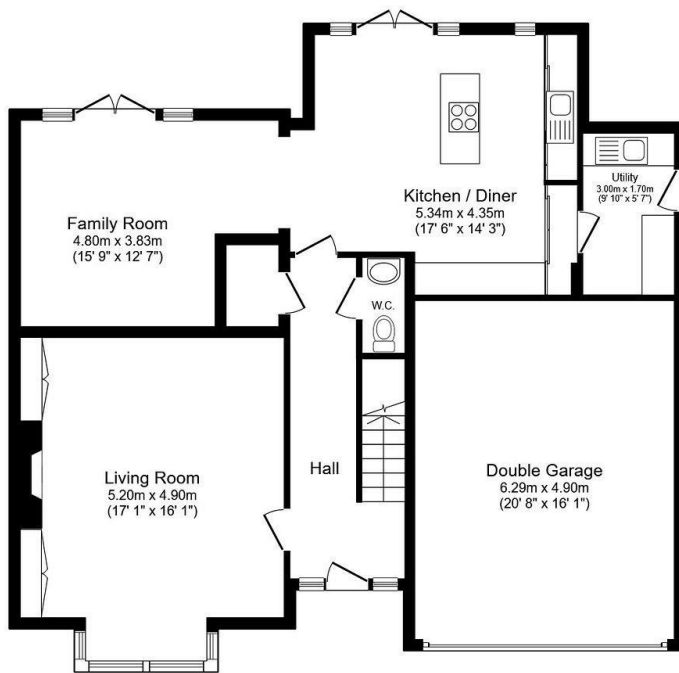






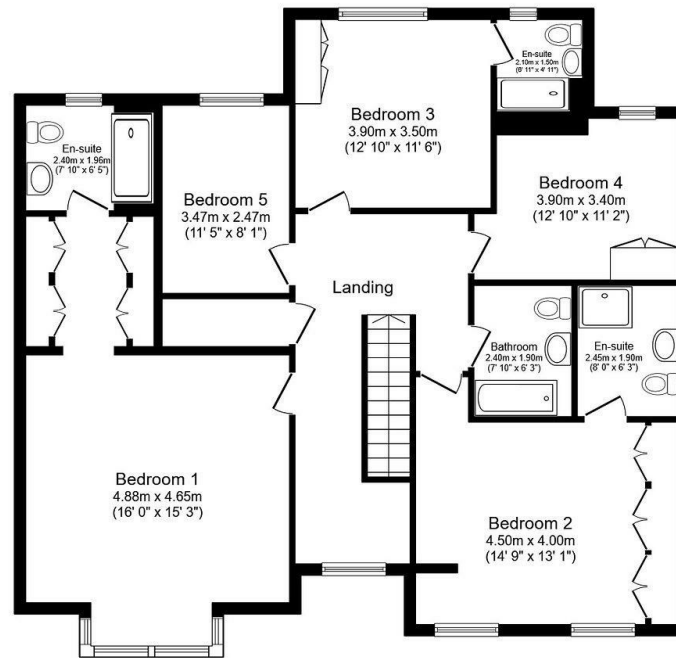
12 Hamlet Court Woodlands Manor, Medburn, Newcastle Upon Tyne, NE200DQ





### Ground Floor

Floor area 121.2 sq.m. (1,305 sq.ft.)



### First Floor

Floor area 138.2 sq.m. (1,487 sq.ft.)

Total floor area: 259.4 sq.m. (2,792 sq.ft.)

This floor plan is for illustrative purposes only. It is not drawn to scale. Any measurements, floor areas (including any total floor area), openings and orientations are approximate. No details are guaranteed, they cannot be relied upon for any purpose and do not form any part of any agreement. No liability is taken for any error, omission or misstatement. A party must rely upon its own inspection(s).



EPC Rating: C  
Council Tax Band: G

Whilst every care has been taken to prepare these particulars, they are for guidance purposes only. All measurements are approximate and whilst every care has been taken to ensure their accuracy, they should not be relied upon and potential buyers/tenants are advised to recheck the measurements. The agent has not tested any equipment, services, fixtures or fittings and makes no representation regarding their condition.

#### CONTACT

11 West Road, Ponteland,  
Northumberland, NE20 9SU

E: [ponteland@goodfellowsestateagents.com](mailto:ponteland@goodfellowsestateagents.com)  
T: 01661 829164

