

44 Ladywell Way
Ponteland
Newcastle Upon Tyne
NE20 9TE

Price
£520,000



44 Ladywell Way
Ponteland
Newcastle Upon Tyne
NE20 9TE

- 4 Bedrooms
- Open Plan Kitchen/Dining/Living
- Bathroom
- Shower Room WC
- Views Over Fields
- Recently Extended and Modernised
- Lounge
- Utility Room
- South Facing Rear Garden
- No Onward Chain



4



2

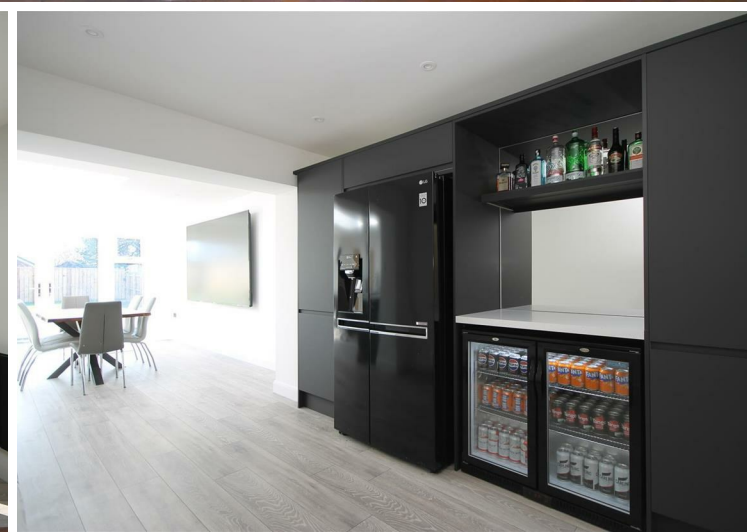


1



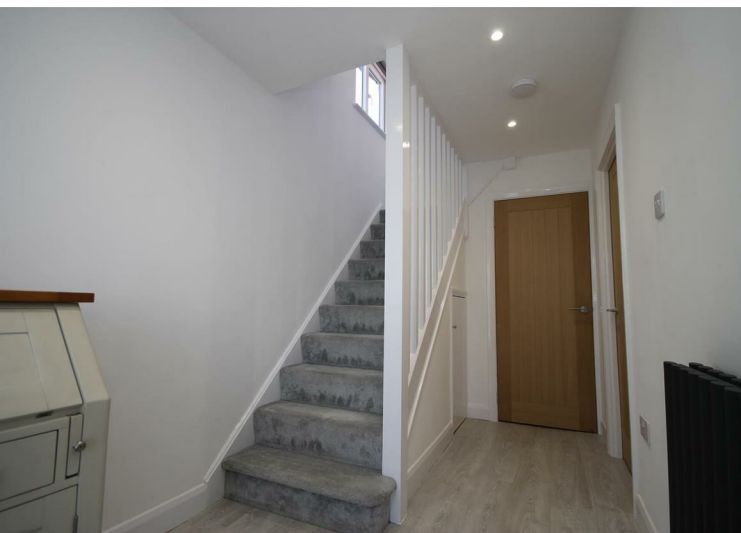
C



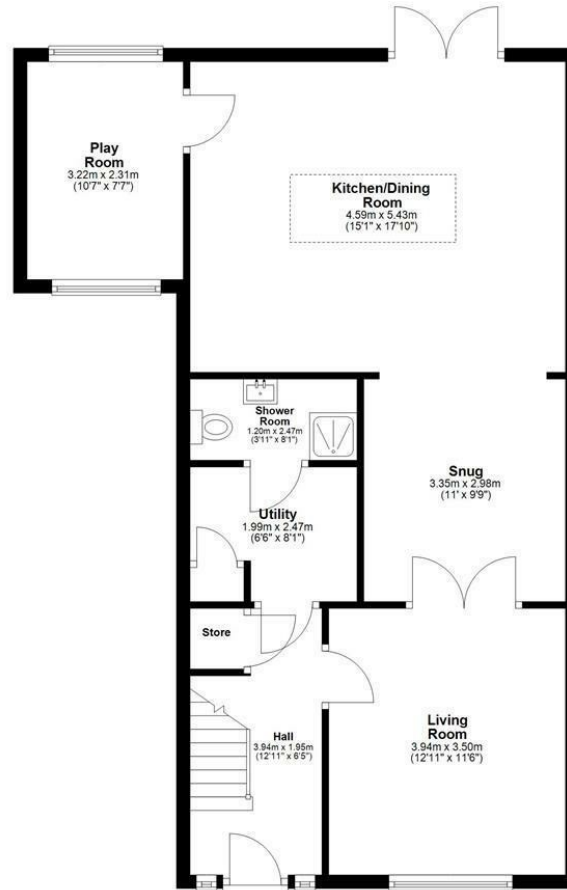




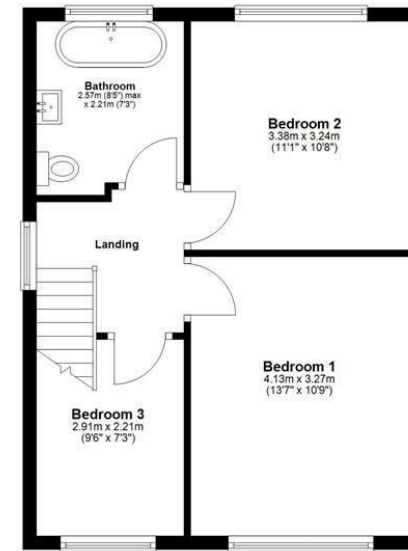
44 Ladywell Way, Ponteland, Newcastle Upon Tyne, NE20 9TE



Ground Floor



First Floor



Total area: approx. 116.4 sq. metres (1252.7 sq. feet)

Whilst every attempt has been made to ensure the accuracy of the floor plan contained here, measurements of doors, windows, rooms and any other items are approximate and no responsibility is taken for any error, omission, or mis-statement. The Plan is for illustrative purposes only. Version 1

Plan produced using PlanUp.

EPC Rating: C
Council Tax Band: D

Whilst every care has been taken to prepare these particulars, they are for guidance purposes only. All measurements are approximate and whilst every care has been taken to ensure their accuracy, they should not be relied upon and potential buyers/tenants are advised to recheck the measurements. The agent has not tested any equipment, services, fixtures or fittings and makes no representation regarding their condition.

CONTACT

11 West Road, Ponteland,
Northumberland, NE20 9SU

E: ponteland@goodfellowsestateagents.com
T: 01661 829164

Goodfellows
estate agents.com