

4 Tulip Close
Blaydon-On-Tyne
NE21 4EN

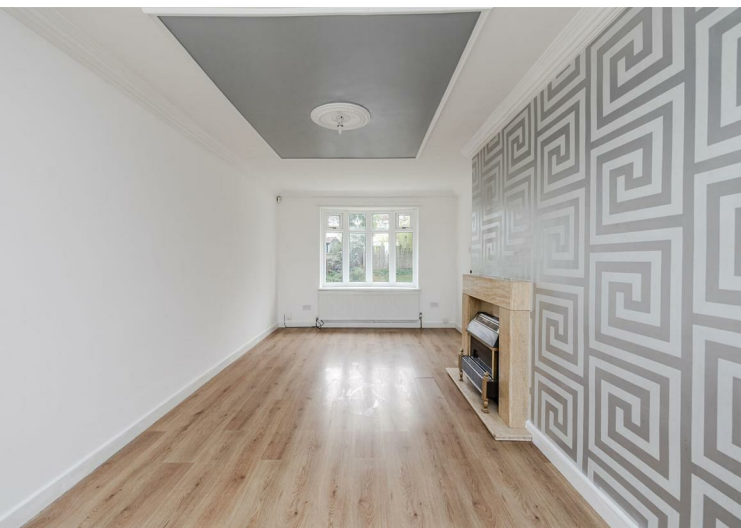
Offers Over
£90,000



4 Tulip Close
Blaydon-On-Tyne
NE21 4EN

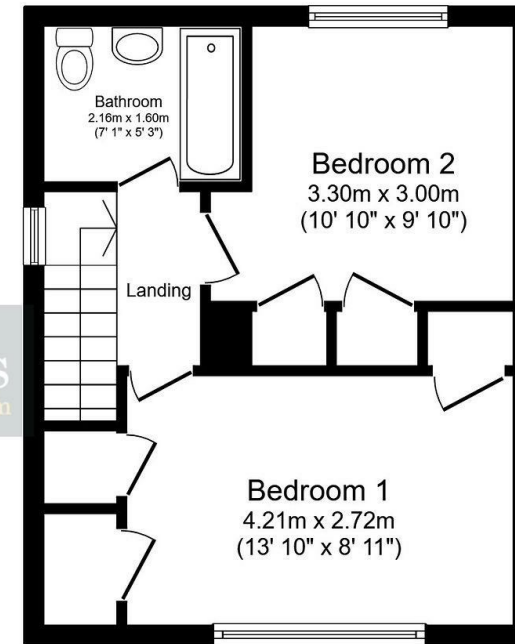
- 2 bedroom end terrace house
- Ideal for a first time buyer
- Extended breakfasting kitchen
- Gas central heating
- Council tax band A
- No upper chain involved
- Corner plot garden to the front and side
- Yard to the rear
- Sealed unit double glazed windows







Ground Floor
Floor area 43.5 sq.m. (468 sq.ft.)



First Floor
Floor area 33.3 sq.m. (359 sq.ft.)

Total floor area: 76.8 sq.m. (826 sq.ft.)

This floor plan is for illustrative purposes only. It is not drawn to scale. Any measurements, floor areas (including any total floor area), openings and orientations are approximate. No details are guaranteed, they cannot be relied upon for any purpose and do not form any part of any agreement. No liability is taken for any error, omission or misstatement. A party must rely upon its own inspection(s).



EPC Rating:
Council Tax Band: A

Whilst every care has been taken to prepare these particulars, they are for guidance purposes only. All measurements are approximate and whilst every care has been taken to ensure their accuracy, they should not be relied upon and potential buyers/tenants are advised to recheck the measurements. The agent has not tested any equipment, services, fixtures or fittings and makes no representation regarding their condition.

CONTACT

128 The Roman Way, West Denton,
Newcastle upon Tyne, NE5 5AD

E:
westdenton@goodfellowsestateagents.com
T: 0191 2677500

