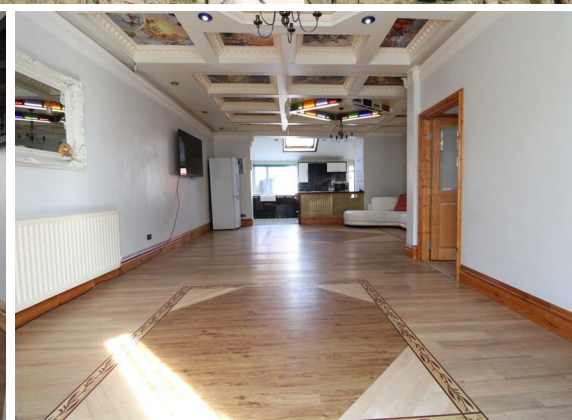


10 Northumberland  
Road  
Lemington  
Newcastle Upon Tyne  
NE15 8SD

Offers Over  
£135,000

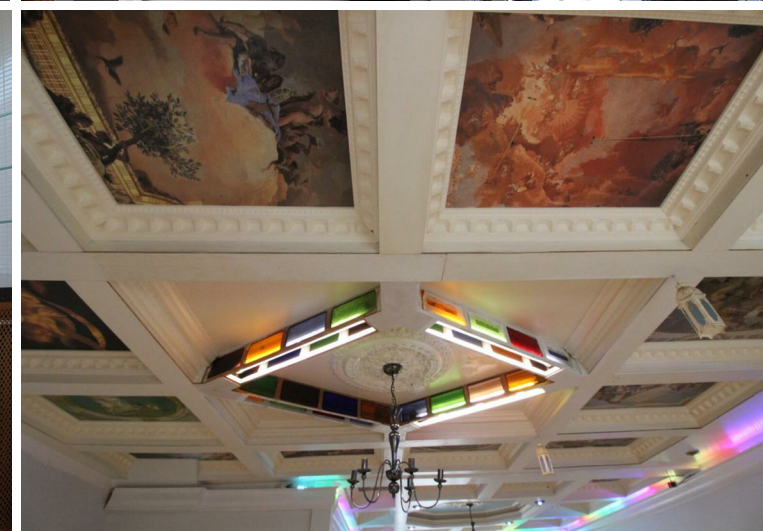
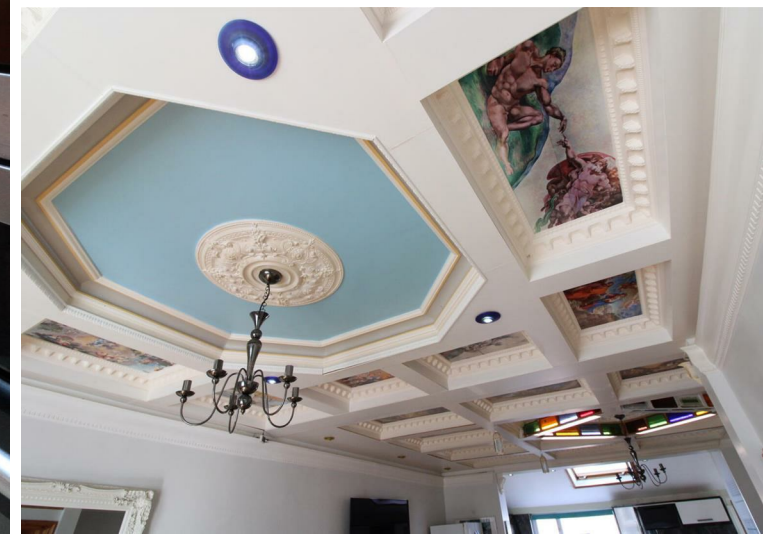


10 Northumberland Road  
Lemington  
Newcastle Upon Tyne  
NE15 8SD

- Spacious 2 bedroom terrace house
- No upper chain involved
- Downstairs w/c
- Nearby bus routes and shops
- Sealed unit double glazed windows

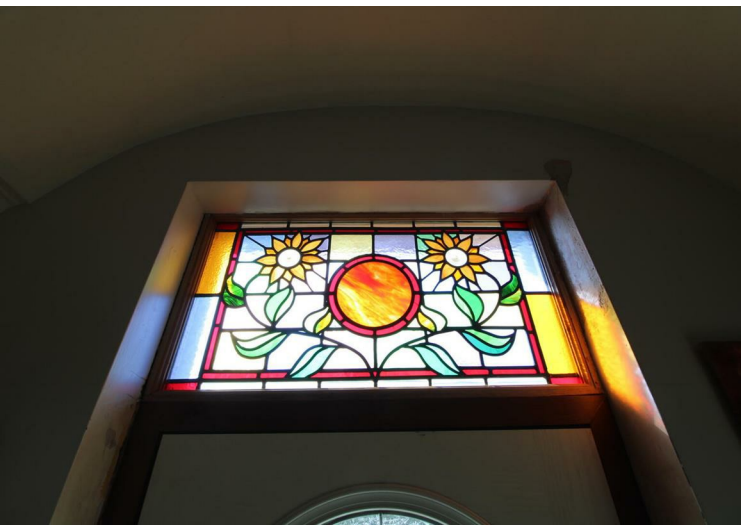
- Great open plan living to the ground floor
- Modern kitchen and bathroom
- Private yard to the rear
- Gas central heating







10 Northumberland Road, Lemington, Newcastle Upon Tyne, NE15 8SD



**EPC Rating: C**  
**Council Tax Band: A**

Whilst every care has been taken to prepare these particulars, they are for guidance purposes only. All measurements are approximate and whilst every care has been taken to ensure their accuracy, they should not be relied upon and potential buyers/tenants are advised to recheck the measurements. The agent has not tested any equipment, services, fixtures or fittings and makes no representation regarding their condition.

**CONTACT**

128 The Roman Way, West Denton,  
Newcastle upon Tyne, NE5 5AD

E:  
westdenton@goodfellowsestateagents.com  
T: 0191 2677500

**Goodfellows**  
estate agents.com