

3 Rosella Drive
Abbey Heights
Newcastle Upon Tyne
NE15 9GU

Price
£330,000



3 Rosella Drive
Abbey Heights
Newcastle Upon Tyne
NE15 9GU

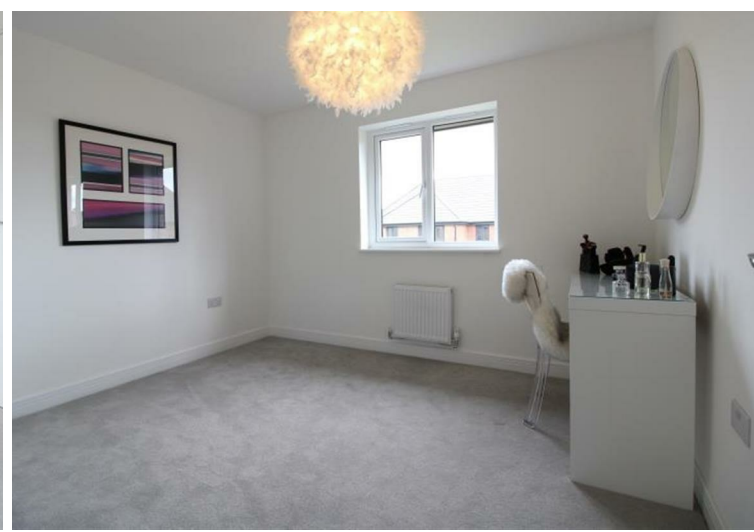
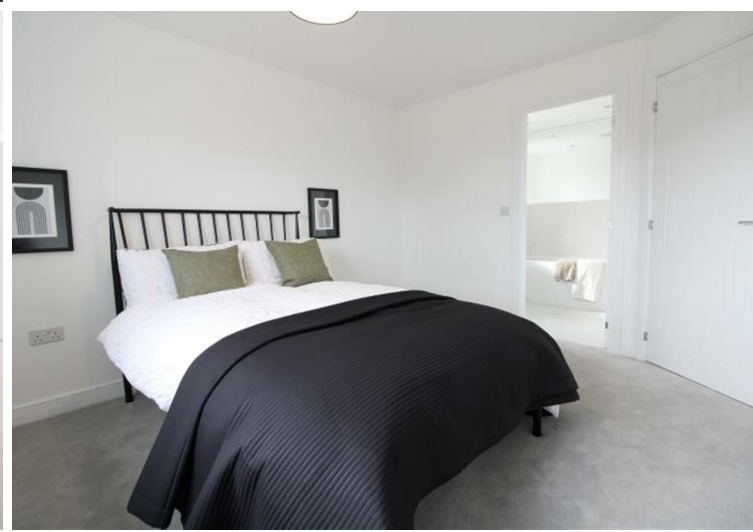
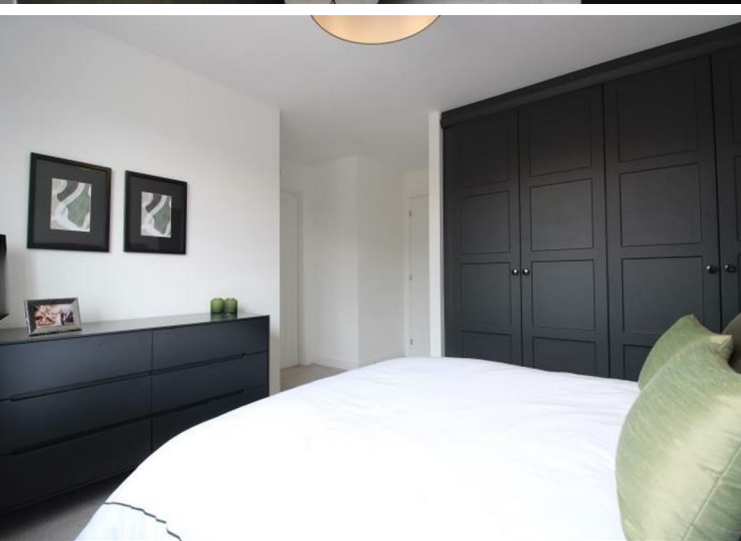
- Three Bedroom Detached House
- Great Open Plan Kitchen Diner
- En-Suite to Bedroom 1
- Driveway and Garage
- Sealed Unit Double Glazed Windows
- Immaculately Presented
- Downstairs W/C
- Jack & Jill Bathroom to Bedroom 2
- Gas Central Heating
- Council Tax Band D | EPC B

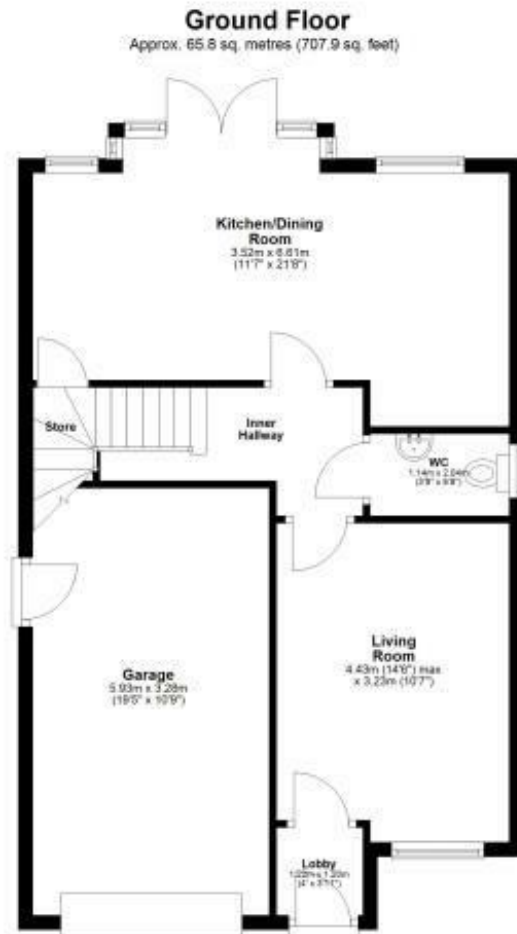






3 Rosella Drive, Abbey Heights, Newcastle Upon Tyne, NE15 9GU





Total area: approx. 120.1 sq. metres (1292.4 sq. feet)

Whilst every attempt has been made to ensure the accuracy of the floor plan contained here, measurements of doors, windows, rooms and any other items are approximate and no responsibility is taken for any error, omission, or mis-statement. The Plan is for illustrative purposes only. Version 1

Plan produced using PlanUp.

EPC Rating: B
Council Tax Band: D

Whilst every care has been taken to prepare these particulars, they are for guidance purposes only. All measurements are approximate and whilst every care has been taken to ensure their accuracy, they should not be relied upon and potential buyers/tenants are advised to recheck the measurements. The agent has not tested any equipment, services, fixtures or fittings and makes no representation regarding their condition.

CONTACT

128 The Roman Way, West Denton,
Newcastle upon Tyne, NE5 5AD

E:
westdenton@goodfellowsestateagents.com
T: 0191 2677500

