

20 Frenton Close  
Chapel House  
Newcastle Upon Tyne  
NE5 1EH



Offers In The  
Region Of

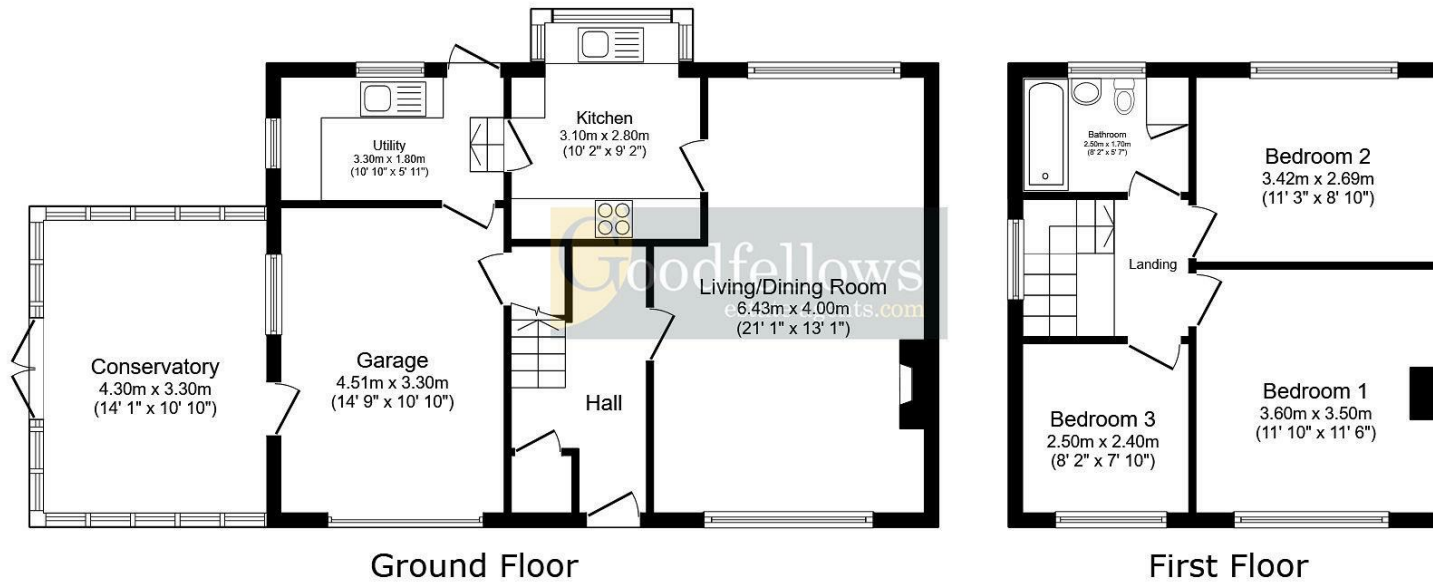


20 Frenton Close  
Chapel House  
Newcastle Upon Tyne  
NE5 1EH

- Beautifully presented 3 bedroom semi-detached house
- Conservatory
- Open plan lounge diner
- Driveway and garage with a boarded loft above
- Local schools and shops within walking distance
- Corner plot
- No upper chain involved
- EV charging
- Gas central heating & sealed unit double glazed windows
- Council Tax Band: C EPC: C







Total floor area: 117.0 sq.m. (1,259 sq.ft.)

This floor plan is for illustrative purposes only. It is not drawn to scale. Any measurements, floor areas (including any total floor area), openings and orientations are approximate. No details are guaranteed, they cannot be relied upon for any purpose and do not form any part of any agreement. No liability is taken for any error, omission or misstatement. A party must rely upon its own inspection(s).



EPC Rating: C  
Council Tax Band: C

Whilst every care has been taken to prepare these particulars, they are for guidance purposes only. All measurements are approximate and whilst every care has been taken to ensure their accuracy, they should not be relied upon and potential buyers/tenants are advised to recheck the measurements. The agent has not tested any equipment, services, fixtures or fittings and makes no representation regarding their condition.

**CONTACT**

128 The Roman Way, West Denton,  
Newcastle upon Tyne, NE5 5AD

E:  
westdenton@goodfellowsestateagents.com  
T: 0191 2677500

