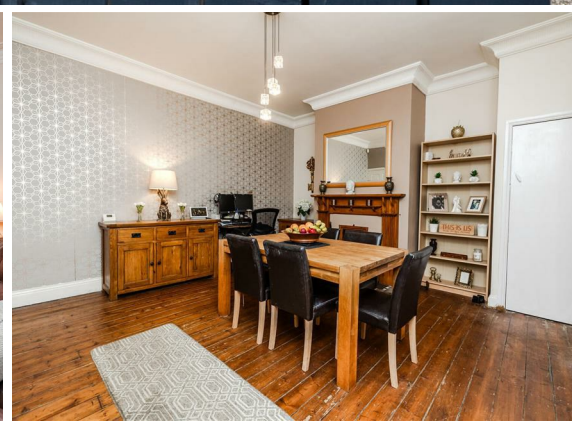


9 Beasley Avenue
Lemington
Newcastle Upon Tyne
NE15 8SP

£120,000

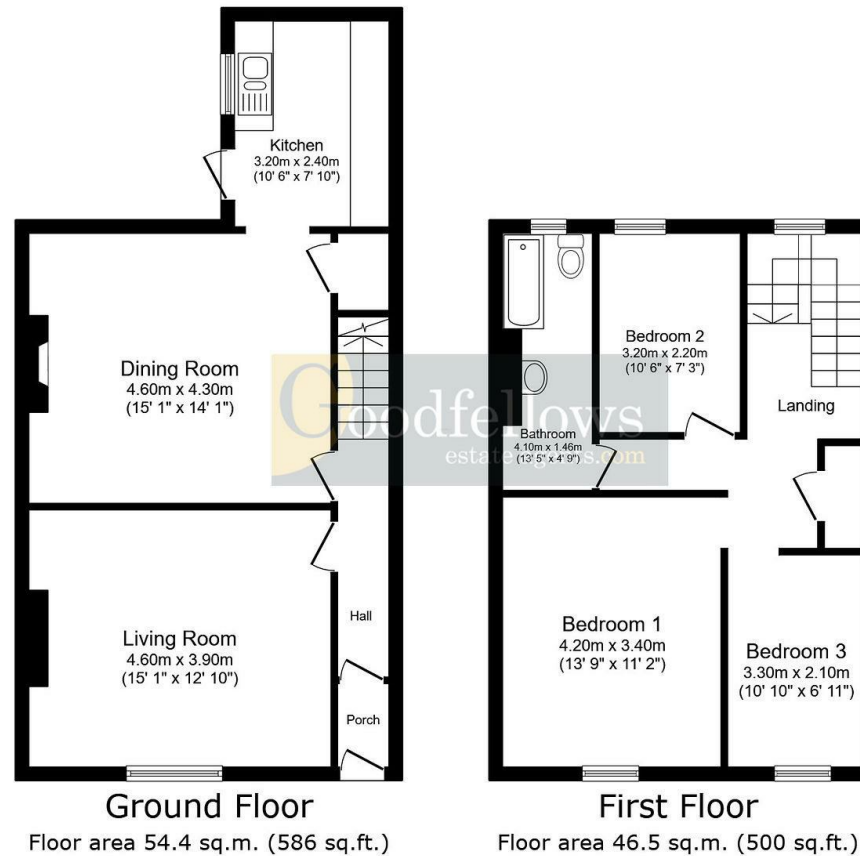


9 Beanley Avenue
Lemington
Newcastle Upon Tyne
NE15 8SP

- 3 bedroom terrace house
- 2 reception rooms
- Decking area to the front garden
- Gas central heating
- Council tax band A
- Pedestrianised street
- Well presented throughout
- Enclosed yard to the rear
- Sealed unit double glazed windows
- Ideal for a first time buyer







Total floor area: 100.9 sq.m. (1,086 sq.ft.)

This floor plan is for illustrative purposes only. It is not drawn to scale. Any measurements, floor areas (including any total floor area), openings and orientations are approximate. No details are guaranteed, they cannot be relied upon for any purpose and do not form any part of any agreement. No liability is taken for any error, omission or misstatement. A party must rely upon its own inspection(s).



EPC Rating:
Council Tax Band: A

Whilst every care has been taken to prepare these particulars, they are for guidance purposes only. All measurements are approximate and whilst every care has been taken to ensure their accuracy, they should not be relied upon and potential buyers/tenants are advised to recheck the measurements. The agent has not tested any equipment, services, fixtures or fittings and makes no representation regarding their condition.

CONTACT

128 The Roman Way, West Denton,
Newcastle upon Tyne, NE5 5AD

E:
westdenton@goodfellowsestateagents.com
T: 0191 2677500

