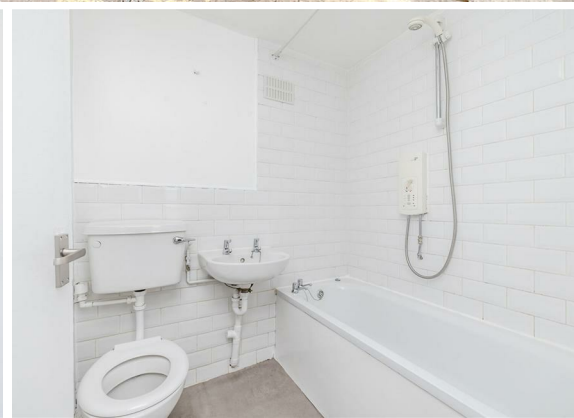


32 Heaton Place
Heaton
Newcastle Upon Tyne
NE6 1XF

£75,000



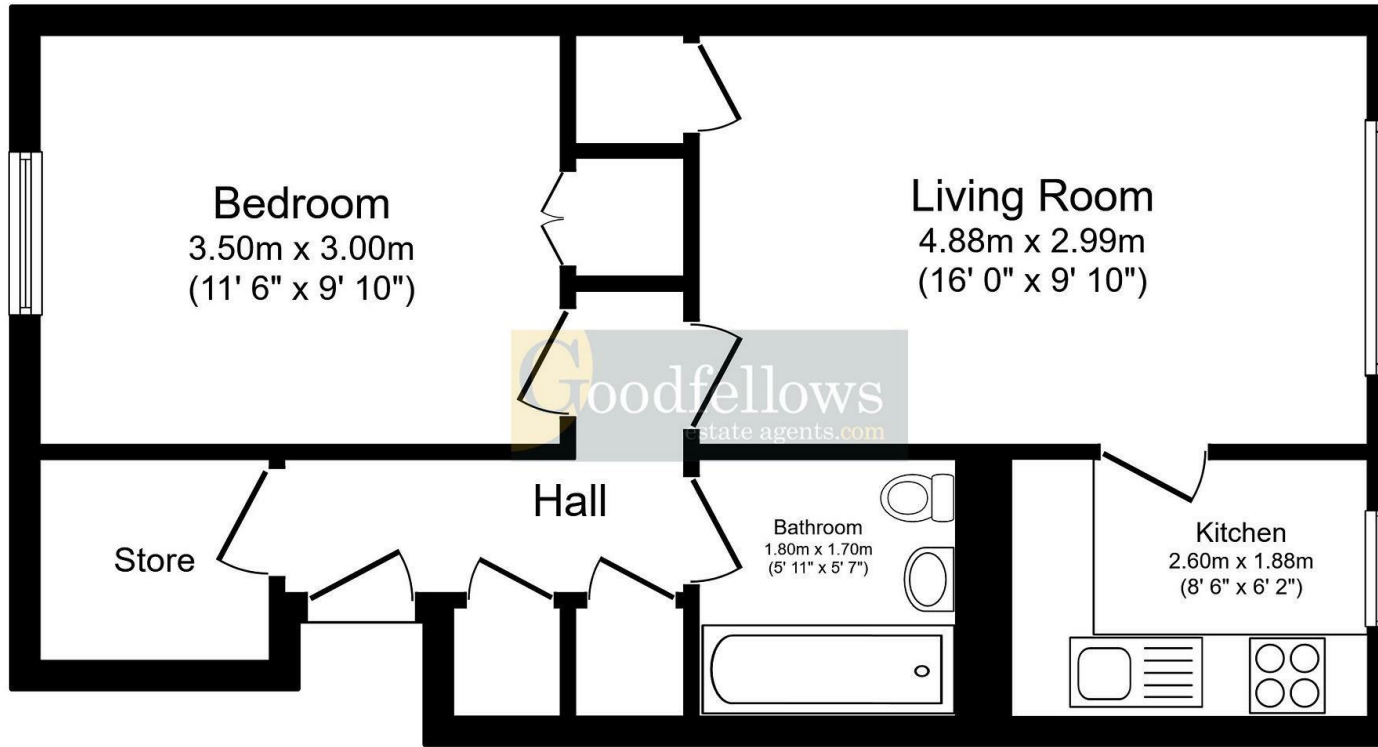
32 Heaton Place
Heaton
Newcastle Upon Tyne
NE6 1XF

- 1 bedroom first floor flat
- Electric heating
- Freshly recored
- Nearby shops & transport links
- Sealed unit double glazed windows

- No upper chain involved
- New carpets
- Modern kitchen & bathroom
- Ideal for a first time buyer
- Council tax band A | EPC E







Floor Plan
Floor area 46.2 sq.m. (498 sq.ft.)

Total floor area: 46.2 sq.m. (498 sq.ft.)

This floor plan is for illustrative purposes only. It is not drawn to scale. Any measurements, floor areas (including any total floor area), openings and orientations are approximate. No details are guaranteed, they cannot be relied upon for any purpose and do not form any part of any agreement. No liability is taken for any error, omission or misstatement. A party must rely upon its own inspection(s).



EPC Rating: E
Council Tax Band: A

Whilst every care has been taken to prepare these particulars, they are for guidance purposes only. All measurements are approximate and whilst every care has been taken to ensure their accuracy, they should not be relied upon and potential buyers/tenants are advised to recheck the measurements. The agent has not tested any equipment, services, fixtures or fittings and makes no representation regarding their condition.

CONTACT
246 Chilingham Road, Heaton,
Newcastle upon Tyne, NE6 5LQ

E: heaton@goodfellowsestateagents.com
T: 0191 2654400

