

61 Great Lime Road  
Forest Hall  
Newcastle Upon Tyne  
NE12 7AE

Offers Over  
£245,000



61 Great Lime Road  
Forest Hall  
Newcastle Upon Tyne  
NE12 7AE

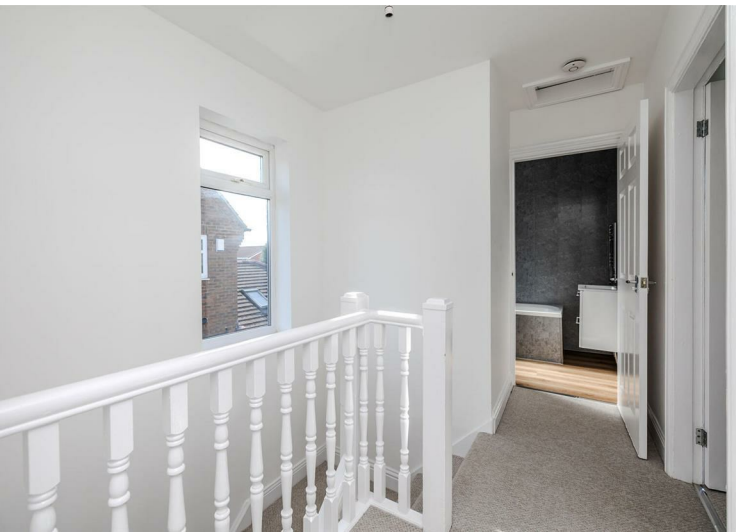
- 3 Bedroomed Semi Detached House
- Lounge with Bay and Fireplace
- Conservatory
- Front & Rear Gardens
- Redecorated; New Carpets & floor Coverings
- Newly Refurbished Throughout
- Refitted 19' Kitchen/Diner with French Doors
- Reappointed Bathroom/WC with Separate Shower
- Detached Garage
- Sought After Location







61 Great Lime Road, Forest Hall, Newcastle Upon Tyne, NE12 7AE





Total floor area: 95.7 sq.m. (1,031 sq.ft.)

This floor plan is for illustrative purposes only. It is not drawn to scale. Any measurements, floor areas (including any total floor area), openings and orientations are approximate. No details are guaranteed, they cannot be relied upon for any purpose and do not form any part of any agreement. No liability is taken for any error, omission or misstatement. A party must rely upon its own inspection(s).



EPC Rating:  
Council Tax Band: C

Whilst every care has been taken to prepare these particulars, they are for guidance purposes only. All measurements are approximate and whilst every care has been taken to ensure their accuracy, they should not be relied upon and potential buyers/tenants are advised to recheck the measurements. The agent has not tested any equipment, services, fixtures or fittings and makes no representation regarding their condition.

CONTACT  
246 Chilingham Road, Heaton,  
Newcastle upon Tyne, NE6 5LQ  
E: heaton@goodfellowsestateagents.com  
T: 0191 2654400

