

29 Beverley Terrace
Walker
Newcastle Upon Tyne
NE6 3UT

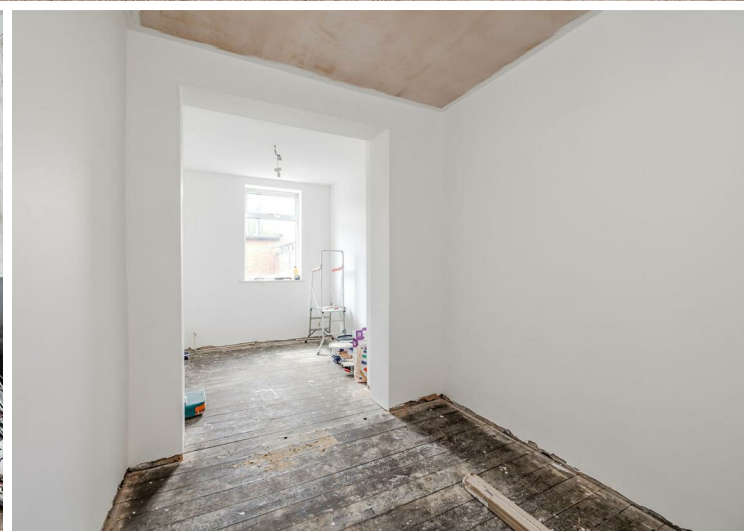
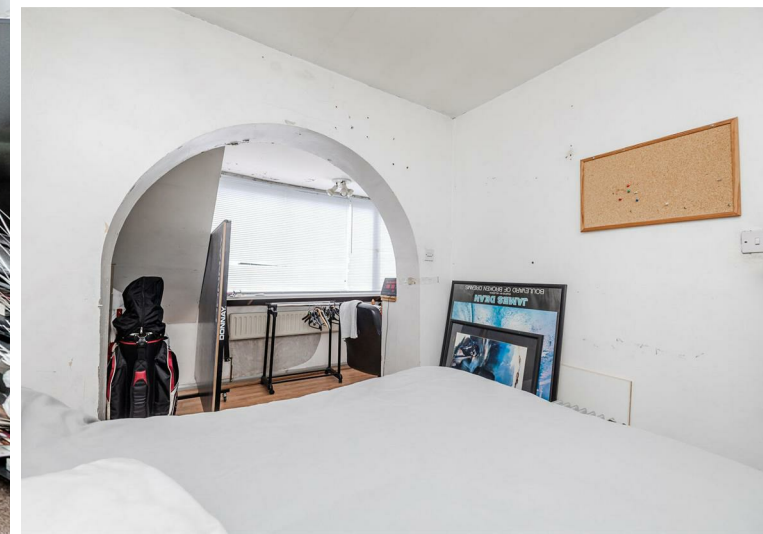
Auction Guide
£117,500

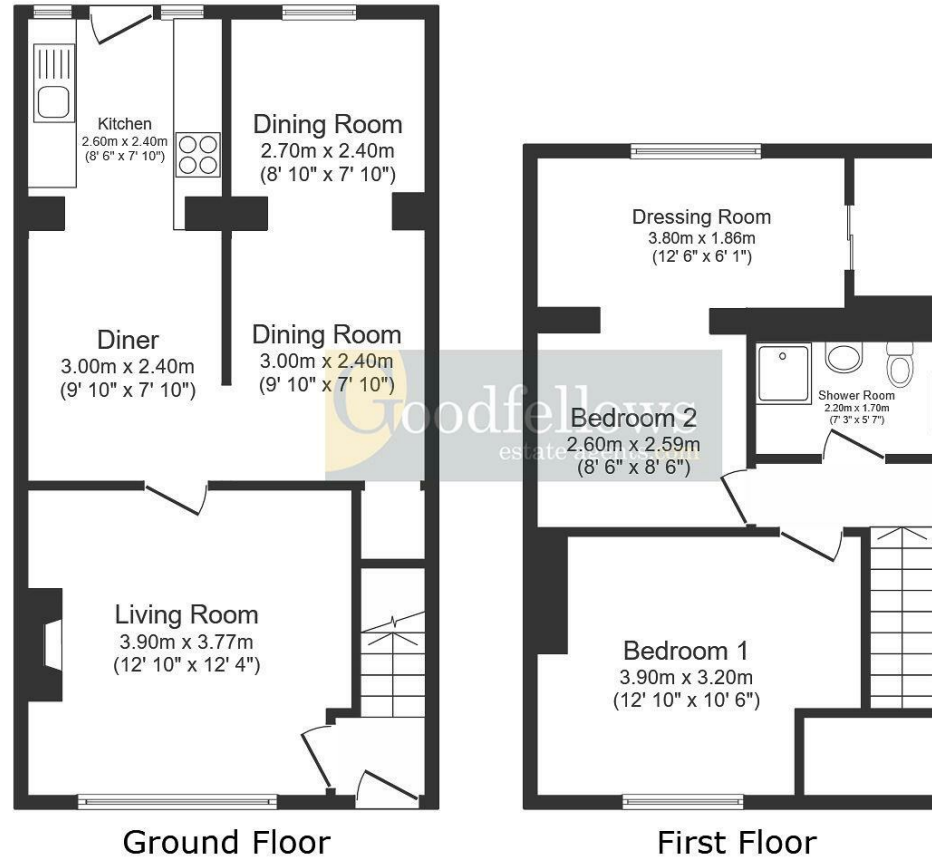


29 Beverley Terrace
Walker
Newcastle Upon Tyne
NE6 3UT

- 3 Bed End Terraced Dormer Terraced House
- Lounge with Fireplace
- Fitted Kitchen
- Wet Room/WC
- Detached Garage
- Extended and Deceptively Spacious
- Dining Room
- 20' Sitting/Bedroom 3
- Front & Rear Gardens
- Off Street Parking







Ground Floor

First Floor

Total floor area: 85.5 sq.m. (920 sq.ft.)

This floor plan is for illustrative purposes only. It is not drawn to scale. Any measurements, floor areas (including any total floor area), openings and orientations are approximate. No details are guaranteed, they cannot be relied upon for any purpose and do not form any part of any agreement. No liability is taken for any error, omission or misstatement. A party must rely upon its own inspection(s).



EPC Rating: D
Council Tax Band: A

Whilst every care has been taken to prepare these particulars, they are for guidance purposes only. All measurements are approximate and whilst every care has been taken to ensure their accuracy, they should not be relied upon and potential buyers/tenants are advised to recheck the measurements. The agent has not tested any equipment, services, fixtures or fittings and makes no representation regarding their condition.

CONTACT
246 Chilingham Road, Heaton,
Newcastle upon Tyne, NE6 5LQ
E: heaton@goodfellowsestateagents.com
T: 0191 2654400

