

213 Simonside Terrace  
Heaton  
Newcastle Upon Tyne  
NE6 5DZ

Offers Over  
£150,000

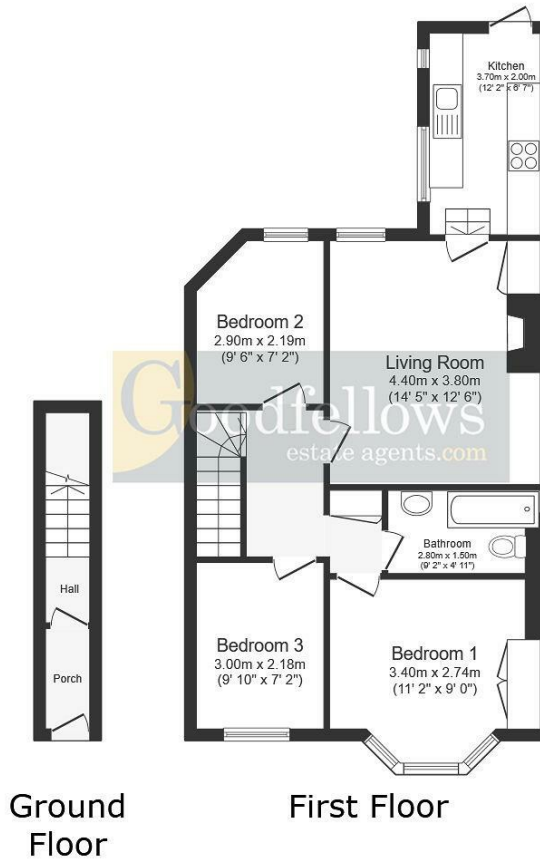


213 Simonside Terrace  
Heaton  
Newcastle Upon Tyne  
NE6 5DZ

- Three bedroom first floor flat
- Nearby shops and bus routes
- Bathroom off the landing
- Sealed unit double glazed windows
- EPC E
- No upper chain involved
- Gas central heating
- Private rear yard
- Council tax band A







Total floor area: 67.2 sq.m. (724 sq.ft.)

This floor plan is for illustrative purposes only. It is not drawn to scale. Any measurements, floor areas (including any total floor area), openings and orientations are approximate. No details are guaranteed, they cannot be relied upon for any purpose and do not form any part of any agreement. No liability is taken for any error, omission or misstatement. A party must rely upon its own inspection(s).



EPC Rating: E  
Council Tax Band: A

Whilst every care has been taken to prepare these particulars, they are for guidance purposes only. All measurements are approximate and whilst every care has been taken to ensure their accuracy, they should not be relied upon and potential buyers/tenants are advised to recheck the measurements. The agent has not tested any equipment, services, fixtures or fittings and makes no representation regarding their condition.

**CONTACT**  
 246 Chilingham Road, Heaton,  
 Newcastle upon Tyne, NE6 5LQ  
 E: [heaton@goodfellowsestateagents.com](mailto:heaton@goodfellowsestateagents.com)  
 T: 0191 2654400

