

6 Martello Gardens
Cochrane Park
Newcastle Upon Tyne
NE7 7LD

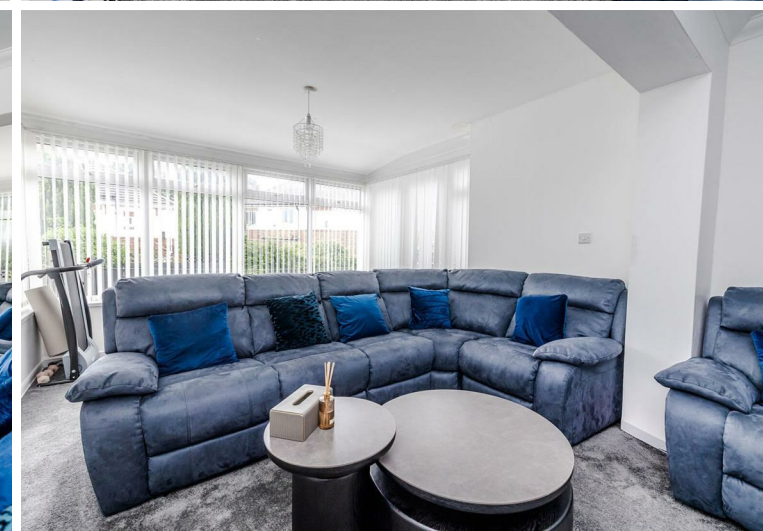
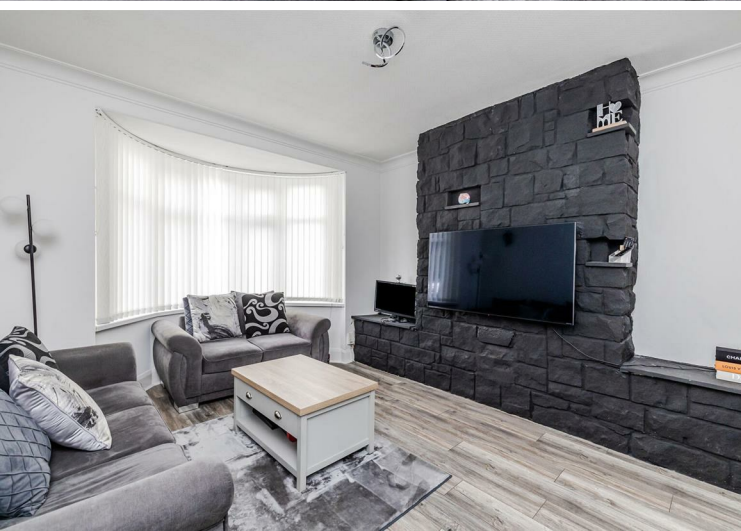
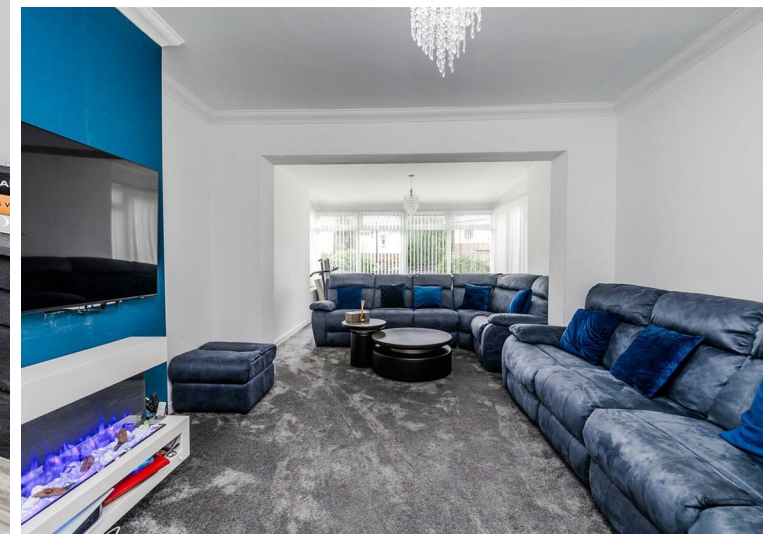
Asking Price
£350,000

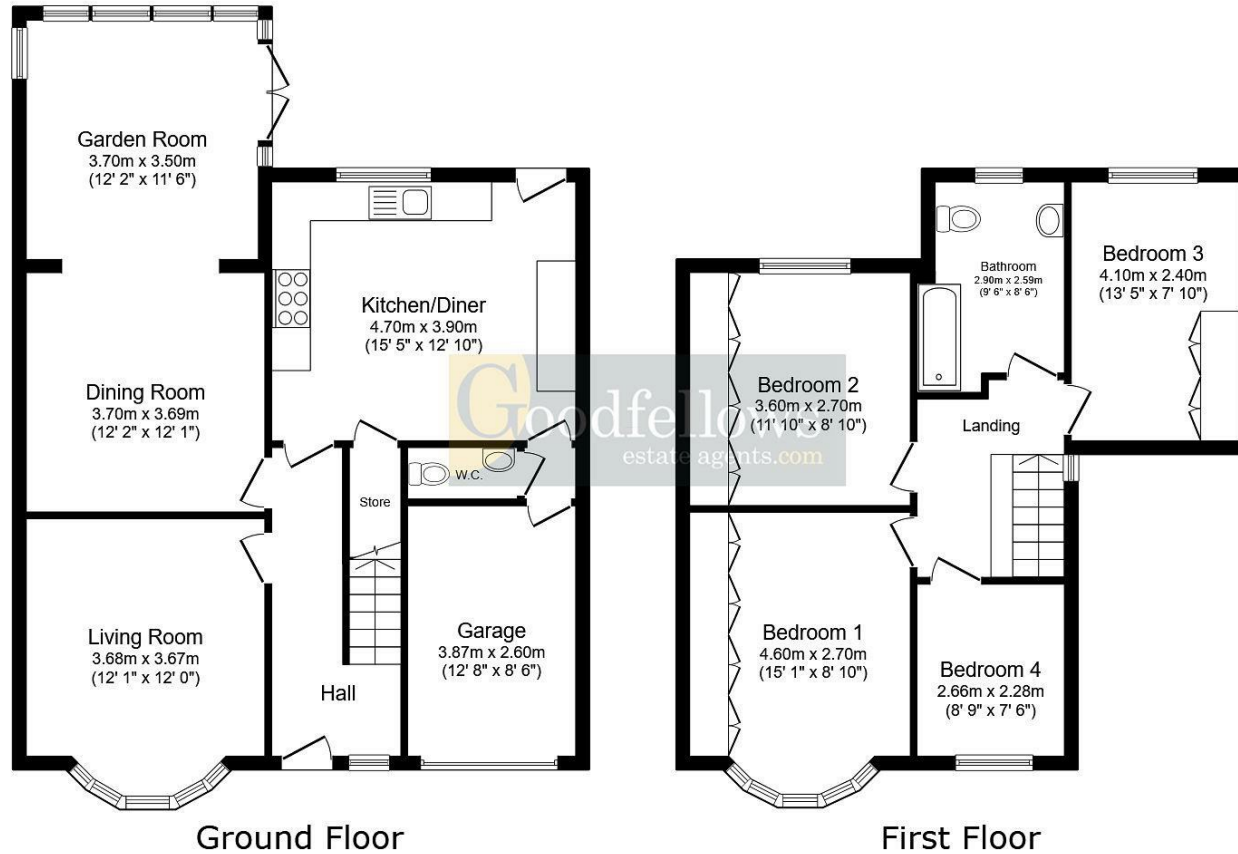


6 Martello Gardens
Cochrane Park
Newcastle Upon Tyne
NE7 7LD

- 4 bedroom extended semi detached house
- Double width driveway
- South facing rear garden
- Ideal for the growing family
- Gas central heating
- 2 reception rooms
- Garage
- No upper chain
- Downstairs w/c
- Sealed unit double glazed windows







Total floor area: 143.1 sq.m. (1,540 sq.ft.)

This floor plan is for illustrative purposes only. It is not drawn to scale. Any measurements, floor areas (including any total floor area), openings and orientations are approximate. No details are guaranteed, they cannot be relied upon for any purpose and do not form any part of any agreement. No liability is taken for any error, omission or misstatement. A party must rely upon its own inspection(s).



EPC Rating:
Council Tax Band: D

Whilst every care has been taken to prepare these particulars, they are for guidance purposes only. All measurements are approximate and whilst every care has been taken to ensure their accuracy, they should not be relied upon and potential buyers/tenants are advised to recheck the measurements. The agent has not tested any equipment, services, fixtures or fittings and makes no representation regarding their condition.

CONTACT
246 Chilingham Road, Heaton,
Newcastle upon Tyne, NE6 5LQ
E: heaton@goodfellowsestateagents.com
T: 0191 2654400

