

34 Kyloe Place
Newbiggin Hall
Newcastle Upon Tyne
NE5 4AU

Asking Price
£130,000



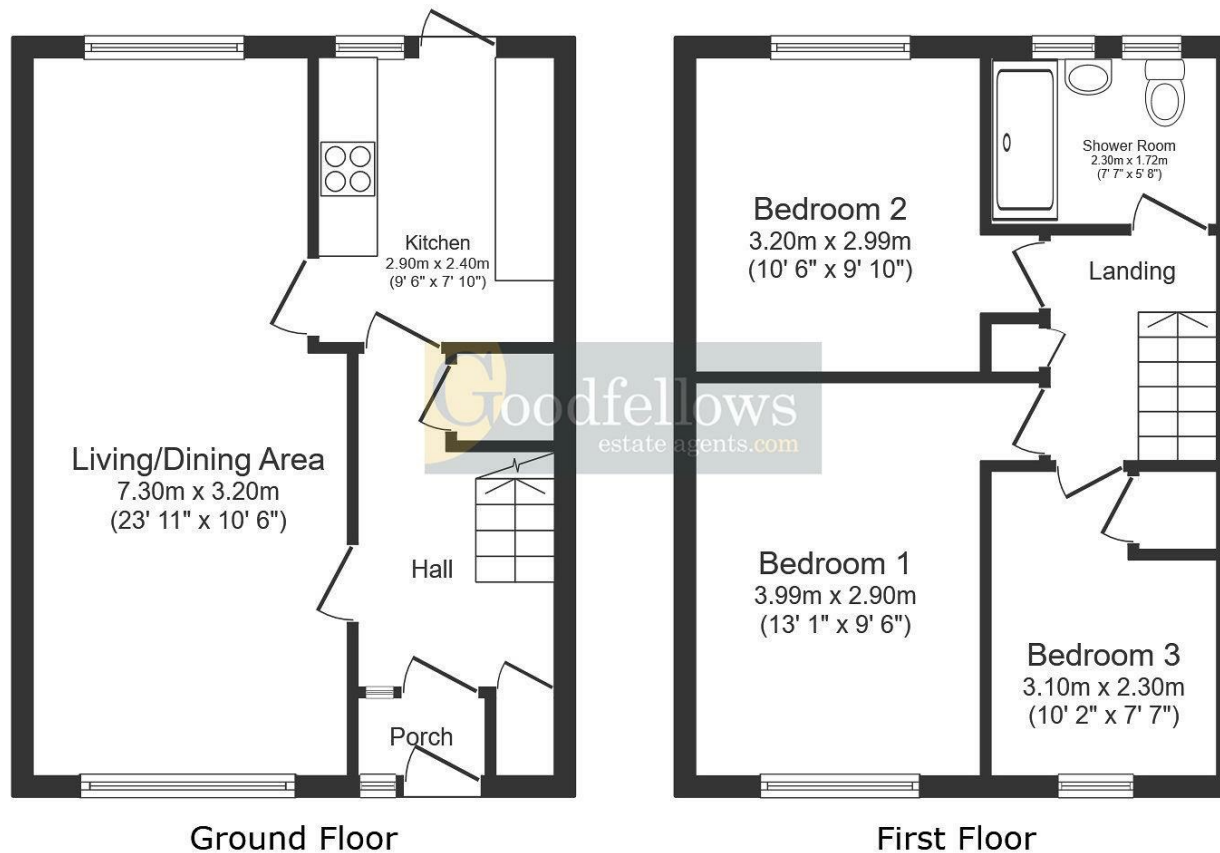
34 Kyloe Place
Newbiggin Hall
Newcastle Upon Tyne
NE5 4AU

- 3 Bed End Terraced House
- Hi Gloss Kitchen
- Front Garden
- Gas CH & SUDG
- Good Investment

- Lounge
- Refurbished Shower/WC
- Enclosed Landscaped Garden
- Ideal First Purchase
- Convenient for Amenities







Total floor area: 77.4 sq.m. (833 sq.ft.)

This floor plan is for illustrative purposes only. It is not drawn to scale. Any measurements, floor areas (including any total floor area), openings and orientations are approximate. No details are guaranteed, they cannot be relied upon for any purpose and do not form any part of any agreement. No liability is taken for any error, omission or misstatement. A party must rely upon its own inspection(s).



EPC Rating:
Council Tax Band: A

Whilst every care has been taken to prepare these particulars, they are for guidance purposes only. All measurements are approximate and whilst every care has been taken to ensure their accuracy, they should not be relied upon and potential buyers/tenants are advised to recheck the measurements. The agent has not tested any equipment, services, fixtures or fittings and makes no representation regarding their condition.

CONTACT
246 Chilingham Road, Heaton,
Newcastle upon Tyne, NE6 5LQ
E: heaton@goodfellowsestateagents.com
T: 0191 2654400

