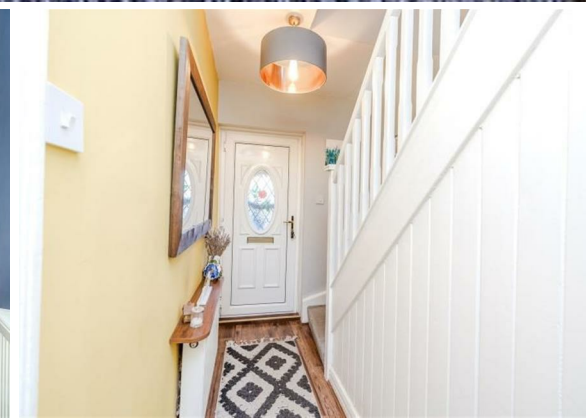




115 Holystone
Crescent
High Heaton
Newcastle upon Tyne
NE7 7EY

Guide Price
£180,000



115 Holystone Crescent
High Heaton
Newcastle upon Tyne
NE7 7EY

- 3 Bed End Terraced House
- Lounge with Log Burner and Recessed Shelving
- Well Fitted Breakfasting Kitchen
- Off Street Parking and Front Garden
- Sought After Residential Area

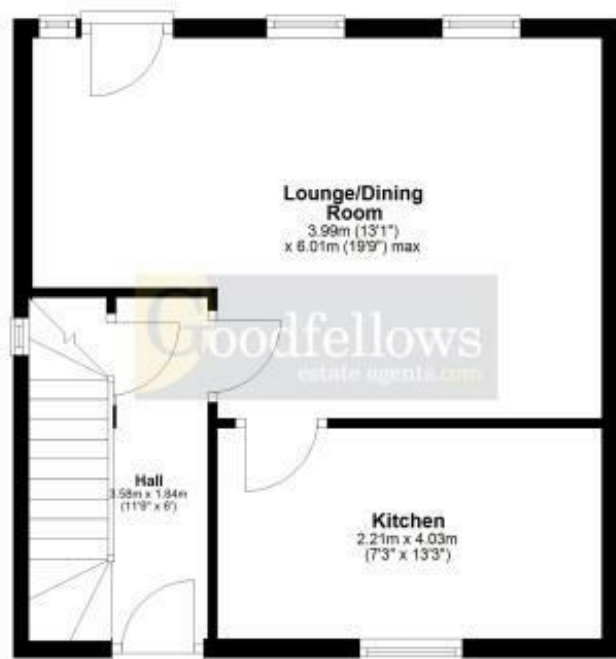
- Well Presented & Appointed
- Dining Room with Door to the Garden
- Bathroom/WC with Shower
- Lovely South Facing Rear Family Garden
- An Ideal First Purchase/Downsize





Ground Floor

Approx. 37.8 sq. metres (406.6 sq. feet)



First Floor

Approx. 37.7 sq. metres (406.2 sq. feet)



Total area: approx. 75.5 sq. metres (812.8 sq. feet)

Whilst every attempt has been made to ensure the accuracy of the floor plan contained here, measurements of doors, windows, rooms and any other items are approximate and no responsibility is taken for any error, omission, or misstatement. The Plan is for illustrative purposes only. Version 1

Plan produced using PlanUp.

EPC Rating: C
Council Tax Band: A

Whilst every care has been taken to prepare these particulars, they are for guidance purposes only. All measurements are approximate and whilst every care has been taken to ensure their accuracy, they should not be relied upon and potential buyers/tenants are advised to recheck the measurements. The agent has not tested any equipment, services, fixtures or fittings and makes no representation regarding their condition.

CONTACT

246 Chillingham Road, Heaton,
Newcastle upon Tyne, NE6 5LQ

E: heaton@goodfellowsestateagents.com
T: 0191 2654400

Goodfellows
estate agents.com