

28 Kentmere Avenue
Walkerdene
Newcastle Upon Tyne
NE6 4HE



Asking Price
£80,000

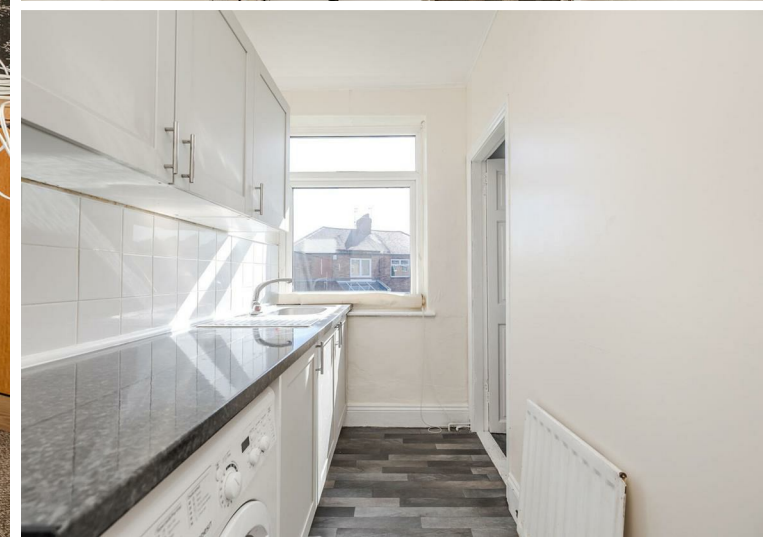


28 Kentmere Avenue
Walkerdene
Newcastle Upon Tyne
NE6 4HE

- 2 Bed Semi Detached Upper Tyneside Flat
- Lounge with Fireplace
- Bathroom/WC with Shower
- Gas central heating
- Well Placed for Metro

- Ideal for a first time buyer
- 'L' Shaped Kitchen
- Lawned Garden
- Sealed unit double glazed windows





EPC Rating: C
Council Tax Band: A

Whilst every care has been taken to prepare these particulars, they are for guidance purposes only. All measurements are approximate and whilst every care has been taken to ensure their accuracy, they should not be relied upon and potential buyers/tenants are advised to recheck the measurements. The agent has not tested any equipment, services, fixtures or fittings and makes no representation regarding their condition.

CONTACT

246 Chilingham Road, Heaton,
Newcastle upon Tyne, NE6 5LQ

E: heaton@goodfellowsestateagents.com
T: 0191 2654400

