

43 Housesteads Close  
Wallsend  
NE28 0BQ

Offers Over  
£265,000



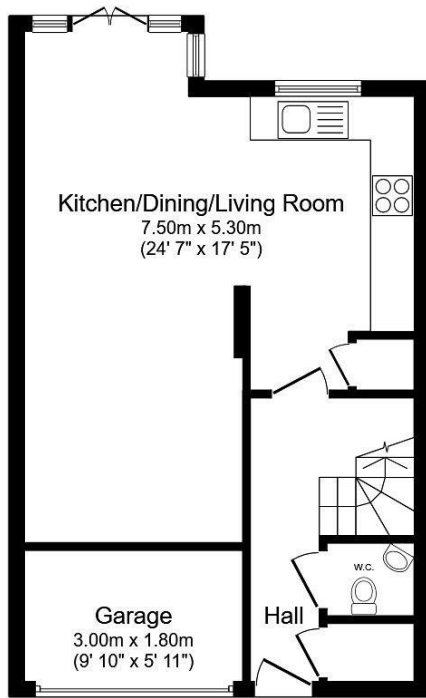
 4     3  
 2     C

43 Housesteads Close  
Wallsend  
NE28 0BQ

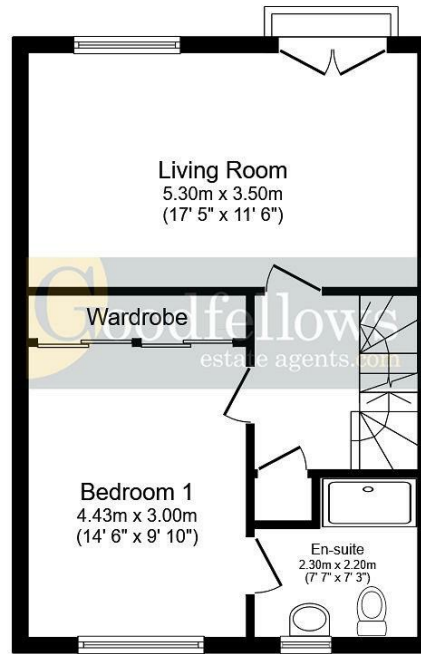
- 4 bedroom semi detached town house
- Cul-de-sac
- Great open plan kitchen / diner / family room
- Driveway
- Gas central heating with a recently renewed boiler
- 2 en-suite shower rooms and a family bathroom
- South facing rear garden
- Downstairs w/c
- Nearby Metro station
- Council Tax Band: D EPC: C



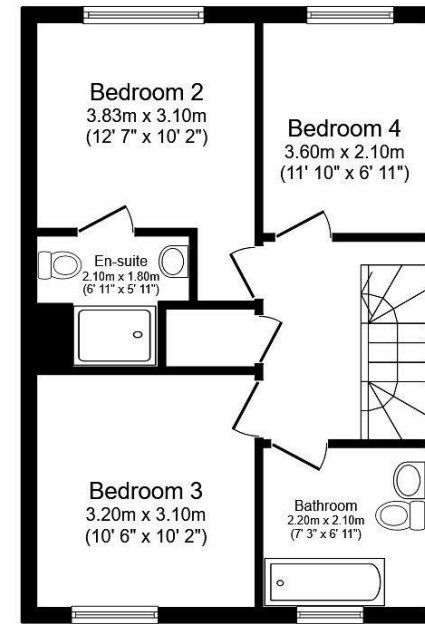




Ground Floor



First Floor



Second Floor

Total floor area: 131.0 sq.m. (1,410 sq.ft.)

This floor plan is for illustrative purposes only. It is not drawn to scale. Any measurements, floor areas (including any total floor area), openings and orientations are approximate. No details are guaranteed, they cannot be relied upon for any purpose and do not form any part of any agreement. No liability is taken for any error, omission or misstatement. A party must rely upon its own inspection(s)



EPC Rating: C  
Council Tax Band: D

Whilst every care has been taken to prepare these particulars, they are for guidance purposes only. All measurements are approximate and whilst every care has been taken to ensure their accuracy, they should not be relied upon and potential buyers/tenants are advised to recheck the measurements. The agent has not tested any equipment, services, fixtures or fittings and makes no representation regarding their condition.

CONTACT

246 Chilingham Road, Heaton,  
Newcastle upon Tyne, NE6 5LQ

E: heaton@goodfellowsestateagents.com  
T: 0191 2654400

