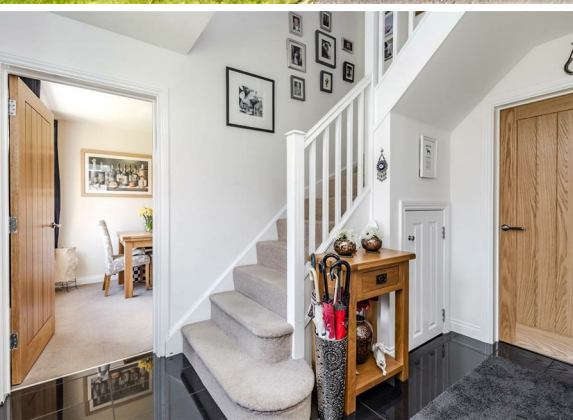


11 Cawfields Close
Hadrian Village
Wallsend
NE28 0BJ

Guide Price
£325,000

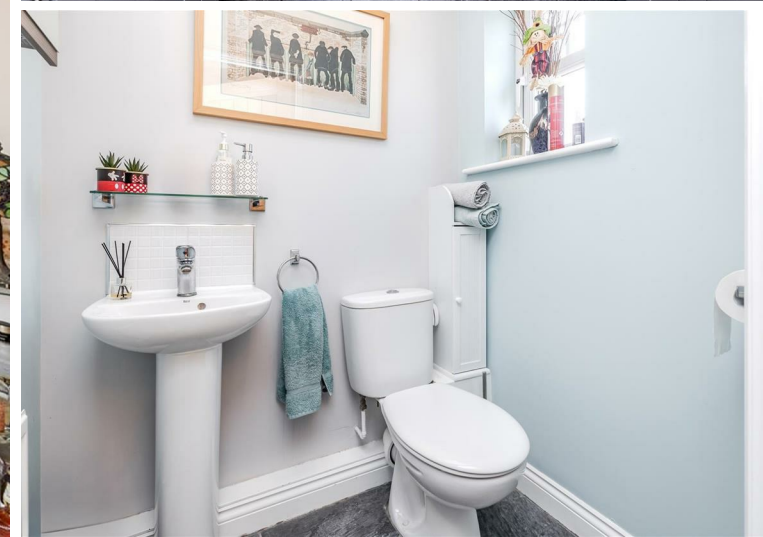


11 Cawfields Close
Hadrian Village
Wallsend
NE28 0BJ

- 4 Bed Detached House
- Pleasant Cul-de-Sac Location
- Lounge with French Doors
- Well Fitted Breakfasting Kitchen
- Family Bathroom & 2 En Suites

- Spacious Family Accommodation over 3 Floors
- Popular Residential Development
- Separate Dining Room
- Cloaks/WC
- Gardens & Detached Double Garage

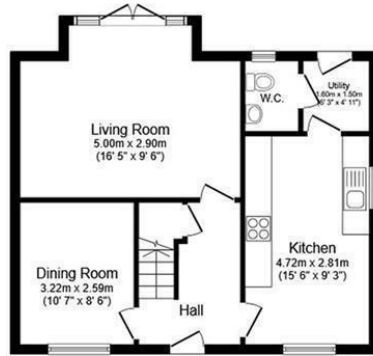






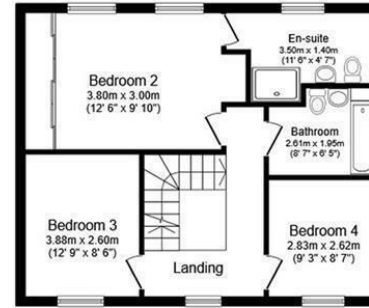
11 Cawfields Close, Hadrian Village, Wallsend, NE28 0BJ





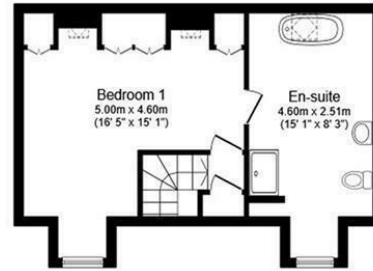
Ground Floor

Floor area 53.0 m² (571 sq.ft.)



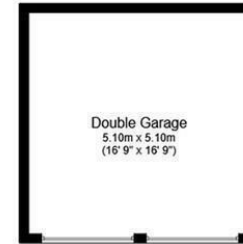
First Floor

Floor area 50.8 m² (547 sq.ft.)



Second Floor

Floor area 38.4 m² (414 sq.ft.)



Garage

Floor area 25.0 m² (269 sq.ft.)

TOTAL: 167.3 m² (1,800 sq.ft.)

This floor plan is for illustrative purposes only. It is not drawn to scale. Any measurements, floor areas (including any total floor area), openings and orientations are approximate. No details are guaranteed, they cannot be relied upon for any purpose and do not form any part of any agreement. No liability is taken for any error, omission or misstatement. A party must rely upon its own inspection(s).



EPC Rating: C
Council Tax Band: D

Whilst every care has been taken to prepare these particulars, they are for guidance purposes only. All measurements are approximate and whilst every care has been taken to ensure their accuracy, they should not be relied upon and potential buyers/tenants are advised to recheck the measurements. The agent has not tested any equipment, services, fixtures or fittings and makes no representation regarding their condition.

CONTACT
246 Chilingham Road, Heaton,
Newcastle upon Tyne, NE6 5LQ
E: heaton@goodfellowsestateagents.com
T: 0191 2654400

