

69 Netherwitton Way  
Newcastle Great Park  
Newcastle Upon Tyne  
NE3 5RP

Price Guide  
£300,000

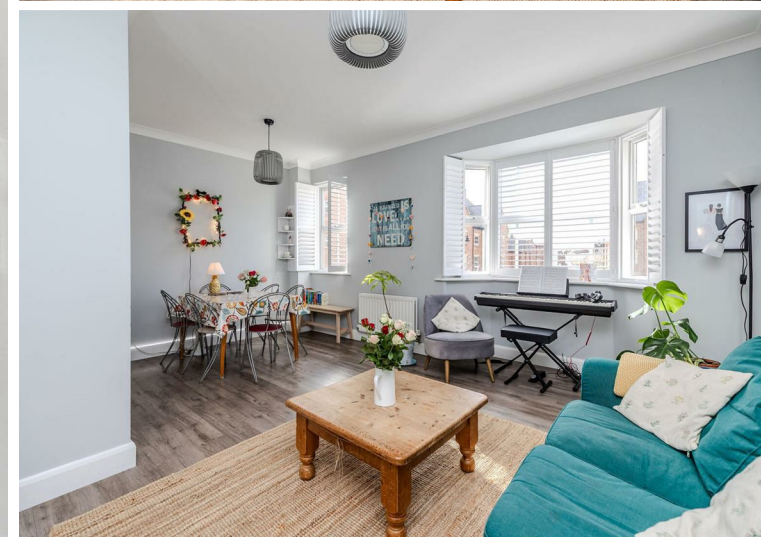


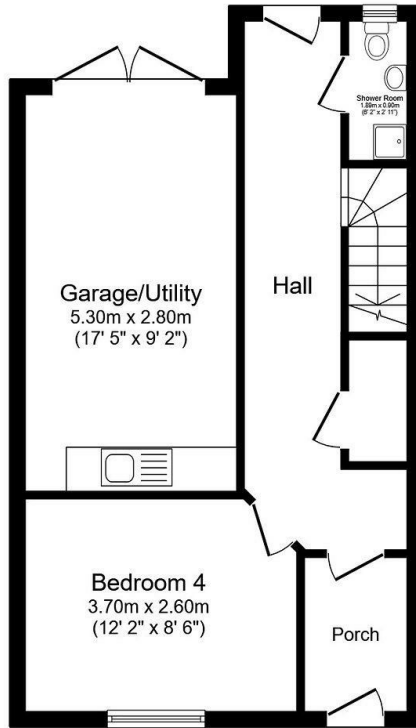
69 Netherwitton Way  
Newcastle Great Park  
Newcastle Upon Tyne  
NE3 5RP

- 4 Bedroomed Townhouse
- Lounge with Bay
- Study
- Integral Garage
- Garden and Parking

- Great Location with Pleasant Aspect
- Refitted Breakfasting Kitchen
- Bathroom, Shower Room & En Suite
- Accommodation over 3 Floors
- A Fabulous Family House

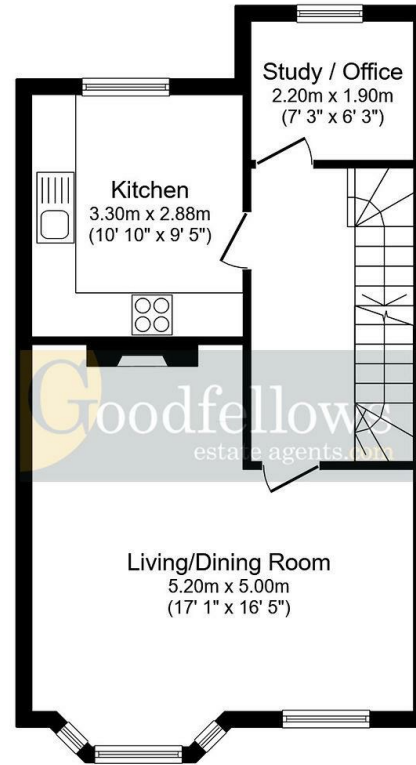






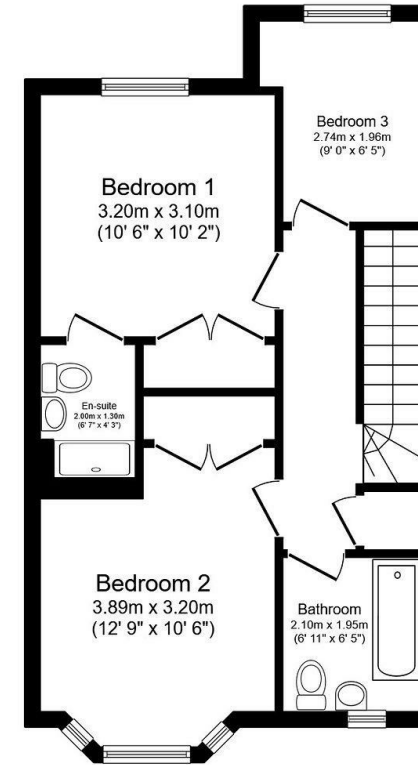
### Ground Floor

Floor area 45.9 sq.m. (494 sq.ft.)



### First Floor

Floor area 46.8 sq.m. (503 sq.ft.)



### Second Floor

Floor area 46.8 sq.m. (503 sq.ft.)

Total floor area: 139.4 sq.m. (1,501 sq.ft.)

This floor plan is for illustrative purposes only. It is not drawn to scale. Any measurements, floor areas (including any total floor area), openings and orientations are approximate. No details are guaranteed, they cannot be relied upon for any purpose and do not form any part of any agreement. No liability is taken for any error, omission or misstatement. A party must rely upon its own inspection(s).



EPC Rating: C  
Council Tax Band: E

Whilst every care has been taken to prepare these particulars, they are for guidance purposes only. All measurements are approximate and whilst every care has been taken to ensure their accuracy, they should not be relied upon and potential buyers/tenants are advised to recheck the measurements. The agent has not tested any equipment, services, fixtures or fittings and makes no representation regarding their condition.

#### CONTACT

2 Middleton South, Newcastle Great Park,  
Newcastle upon Tyne, NE13 9BJ

E: greatpark@goodfellowsestateagents.com  
T: 0191 2848100

