

61 Rayleigh Drive
Wideopen
Newcastle Upon Tyne
NE13 6AJ

Price Guide
£220,000

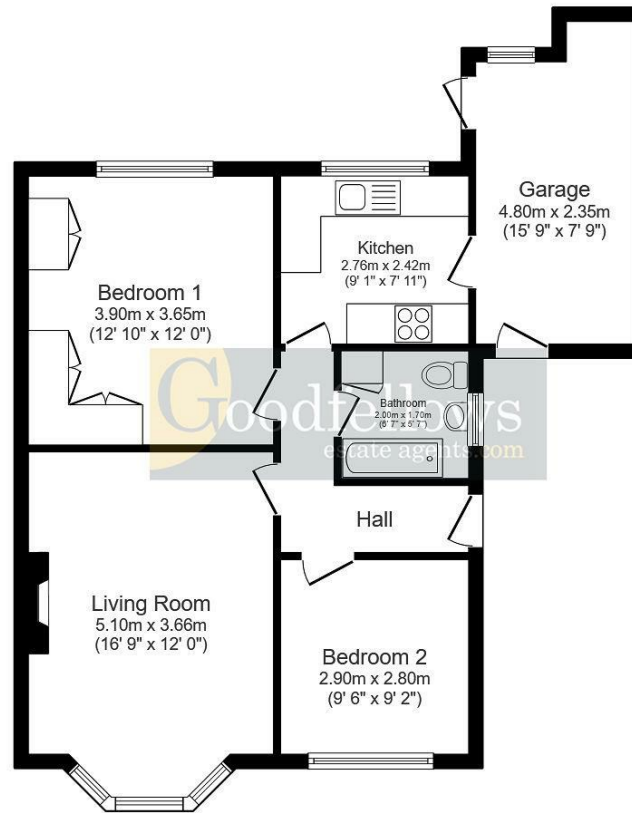


61 Rayleigh Drive
Wideopen
Newcastle Upon Tyne
NE13 6AJ

- 2 Bed Semi Detached Bungalow
- Lounge with Bay & Fireplace
- Spacious Utility Room
- Front Garden
- West Facing Landscaped Rear Garden
- Backing onto Green
- Fitted Kitchen
- Bathroom/WC with Shower
- Driveway with Car Charging Point
- Summer House & Attached Shed







Floor Plan

Total floor area: 68.2 sq.m. (734 sq.ft.)

This floor plan is for illustrative purposes only. It is not drawn to scale. Any measurements, floor areas (including any total floor area), openings and orientations are approximate. No details are guaranteed, they cannot be relied upon for any purpose and do not form any part of any agreement. No liability is taken for any error, omission or misstatement. A party must rely upon its own inspection(s).



EPC Rating: C
Council Tax Band: B

Whilst every care has been taken to prepare these particulars, they are for guidance purposes only. All measurements are approximate and whilst every care has been taken to ensure their accuracy, they should not be relied upon and potential buyers/tenants are advised to recheck the measurements. The agent has not tested any equipment, services, fixtures or fittings and makes no representation regarding their condition.

CONTACT

2 Middleton South, Newcastle Great Park,
Newcastle upon Tyne, NE13 9BJ

E: greatpark@goodfellowsestateagents.com
T: 0191 2848100

