

4 Orangetip Gardens
Newcastle Great Park
Newcastle upon Tyne
NE13 9EG

Offers Over
£200,000

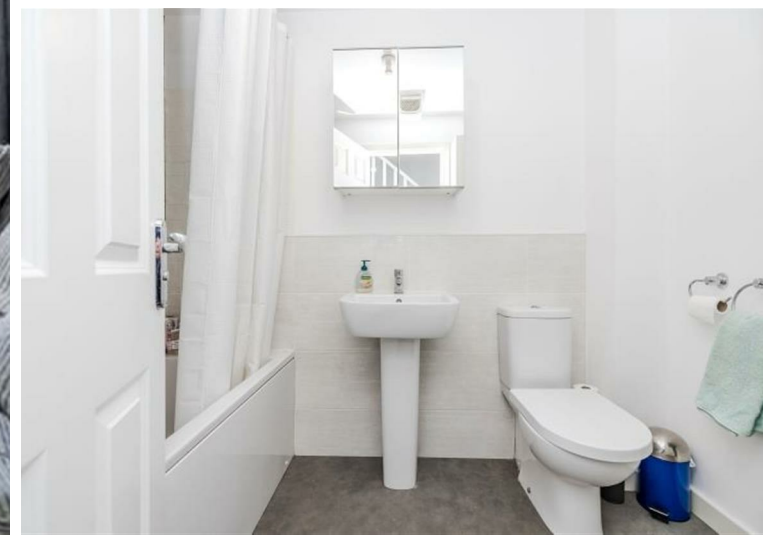


4 Orangetip Gardens
Newcastle Great Park
Newcastle upon Tyne
NE13 9EG

- Three Double Bedrooms
- Kitchen/Breakfast Room
- Family Bathroom /WC
- Driveway Parking
- NO ONWARD CHAIN

- Lounge/Dining Room
- Cloaks W/C
- Rear Garden
- Well Presented
- AVAILABLE NOW



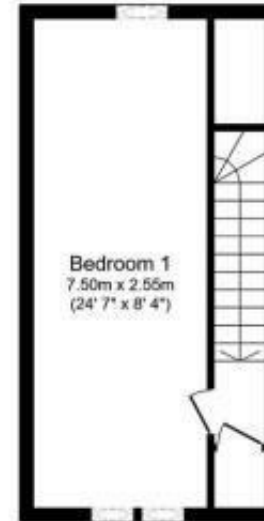




Ground Floor
Floor area 34.3 sq.m. (369 sq.ft.)



First Floor
Floor area 32.4 sq.m. (349 sq.ft.)



Second Floor
Floor area 26.8 sq.m. (288 sq.ft.)

Total floor area: 93.5 sq.m. (1,006 sq.ft.)

This floor plan is for illustrative purposes only. It is not drawn to scale. Any measurements, floor areas (including any total floor area), openings and orientations are approximate. No details are guaranteed, they cannot be relied upon for any purpose and do not form any part of any agreement. No liability is taken for any error, omission or misstatement. A party must rely upon its own inspection(s).



EPC Rating: B
Council Tax Band: C

Whilst every care has been taken to prepare these particulars, they are for guidance purposes only. All measurements are approximate and whilst every care has been taken to ensure their accuracy, they should not be relied upon and potential buyers/tenants are advised to recheck the measurements. The agent has not tested any equipment, services, fixtures or fittings and makes no representation regarding their condition.

CONTACT

2 Middleton South, Newcastle Great Park,
Newcastle upon Tyne, NE13 9BJ

E: greatpark@goodfellowsestateagents.com
T: 0191 2848100

