

11 Humbleton Road  
Newcastle Great Park  
Newcastle upon Tyne  
NE139AZ

Price Guide  
£515,000

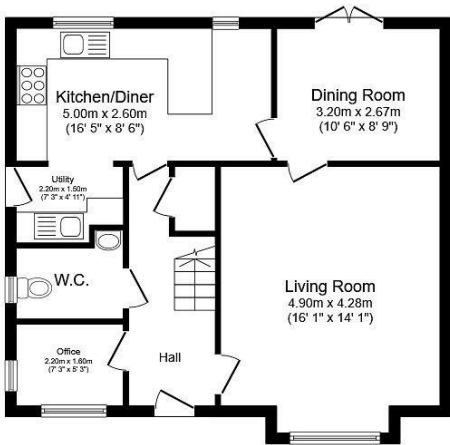


11 Humbleton Road  
Newcastle Great Park  
Newcastle upon Tyne  
NE139AZ

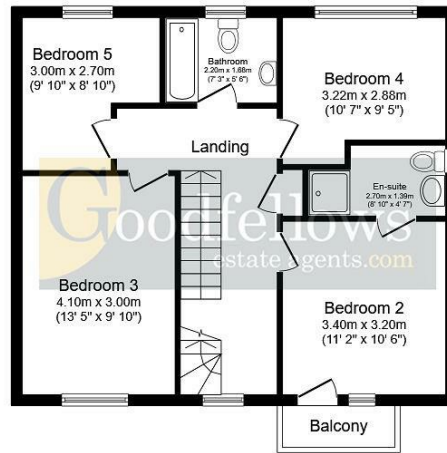
- 5 Bedroomed Detached House
- Lounge with Bay
- Well Fitted Kitchen with Separate Utility
- Study
- Gardens with Summer House
- Flexible Family Accommodation over 3 Floors
- Dining Room with French Doors
- Family Bathroom and 2 En Suites
- Detached Double Garage
- Sought After Residential Area



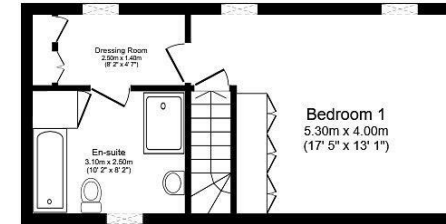




Ground Floor



First Floor



Second Floor

Total floor area: 156.3 sq.m. (1,683 sq.ft.)

This floor plan is for illustrative purposes only. It is not drawn to scale. Any measurements, floor areas (including any total floor area), openings and orientations are approximate. No details are guaranteed, they cannot be relied upon for any purpose and do not form any part of any agreement. No liability is taken for any error, omission or misstatement. A party must rely upon its own inspection(s).



EPC Rating: C  
Council Tax Band: F

Whilst every care has been taken to prepare these particulars, they are for guidance purposes only. All measurements are approximate and whilst every care has been taken to ensure their accuracy, they should not be relied upon and potential buyers/tenants are advised to recheck the measurements. The agent has not tested any equipment, services, fixtures or fittings and makes no representation regarding their condition.

CONTACT

2 Middleton South, Newcastle Great Park,  
Newcastle upon Tyne, NE13 9BJ

E: greatpark@goodfellowsestateagents.com  
T: 0191 2848100

