

ASKING PRICE

**£325,000**

**Eskdale**

Thornbury, BS35 2DR



### PROPERTY SUMMARY

This brand new semi detached home offers modern living across a thoughtfully designed layout. Upon entering, a welcoming hallway leads to a convenient downstairs cloakroom and a contemporary kitchen fitted with integral appliances. The spacious lounge provides a comfortable living area and features elegant French doors that open directly onto the generous rear garden. South facing and private, the garden offers an ideal space for relaxation or entertaining. Upstairs, there are two double bedrooms, a good sized study / third bedroom along with a stylish family bathroom, perfect for growing families or professionals needing extra space.

Outside, the property benefits from a block paved driveway with parking for two vehicles, completing the appeal of this attractive and practical home. The property also boasts solar panels and is EV Charging Ready.

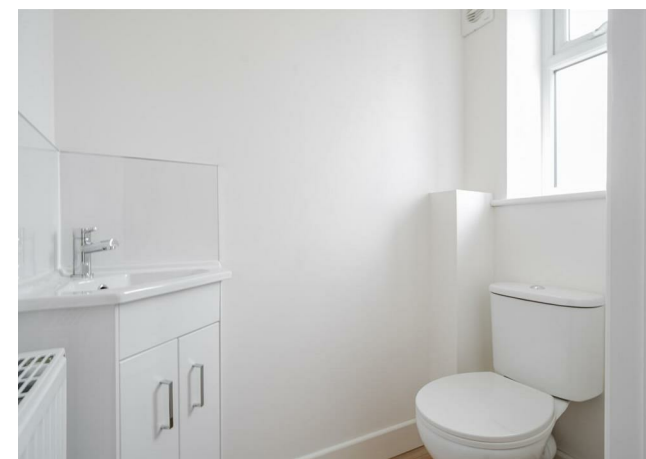
3



1



2







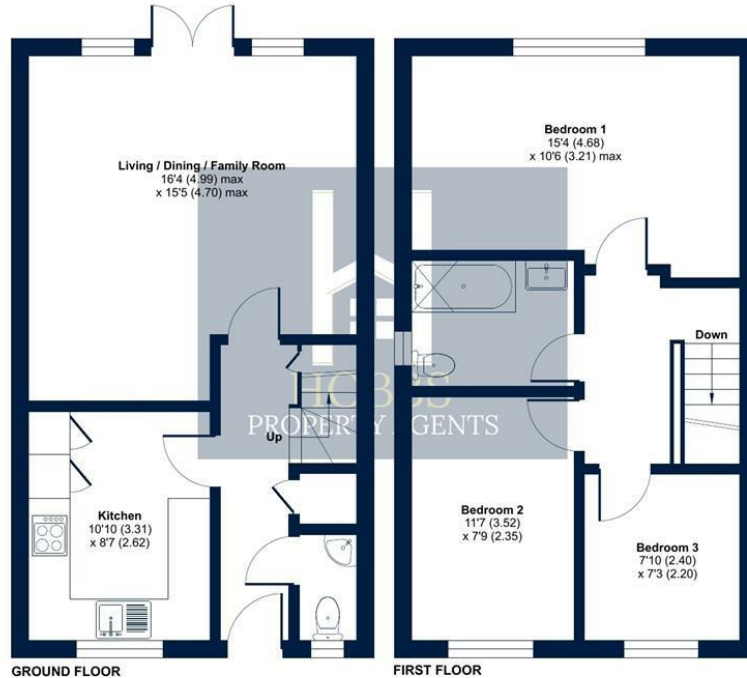






## Eskdale, Thornbury, Bristol, BS35

Approximate Area = 862 sq ft / 80 sq m  
For identification only - Not to scale



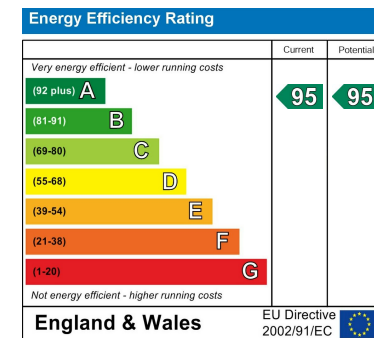
Floor plan produced in accordance with RICS Property Measurement 2nd Edition, Incorporating International Property Measurement Standards (IPMS2 Residential). © richcom 2025. Produced for Hobbs Property Agents Limited. REF: 1290907

**LOCAL AUTHORITY**  
South Gloucestershire

**TENURE**  
Freehold

**COUNCIL TAX BAND**

**VIEWINGS**  
By prior appointment only



Agents Note: Whilst every care has been taken to prepare these particulars, they are for guidance purposes only. All measurements are approximate and are for general guidance purposes only and whilst every care has been taken to ensure their accuracy, they should not be relied upon and potential buyers/tenants are advised to recheck the measurements



### OFFICE DETAILS

01454 529 024  
sales@hobbspropertyagents.co.uk