



BREENS
Meadway
Enfield · EN3

OFFERS IN EXCESS OF

£530,000

FREEHOLD



BREENS

THE HOME

Meadway

Enfield · EN3

KEY FEATURES

- Offered To The Market Chain-Free
- Located In One of Enfield's Most Sought-After Turnings
- In The Catchment Area For St George's Primary and Ark John Keats Academy
- Three-Bedroom, Bay-Fronted, Semi-Detached House
- Living Reception Room & 21ft Fitted Kitchen/Dining Room
- Ground Floor W/C & 1st Floor Family Bathroom
- Private 75ft. Rear Garden
- Potential For Off-Street Parking Subject To Council Consent
- Single Garage To Rear/Side Accessed Via Shared Alleyway
- Located Within Close Proximity to Transport Links & Local Amenities

EPC RATING

D

COUNCIL TAX BAND

D

3

BEDROOMS

1

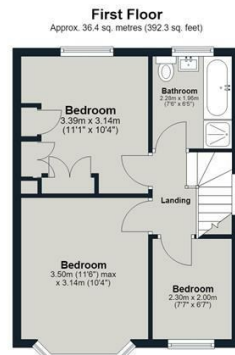
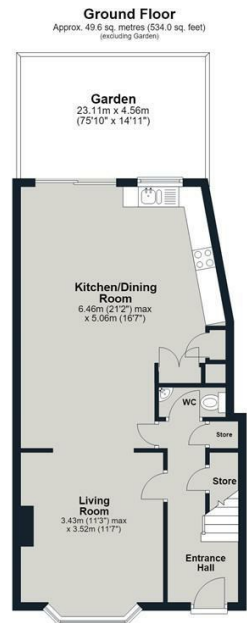
BATHROOMS

1

RECEPTIONS



BREENS



Total area: approx. 101.9 sq. metres (1096.8 sq. feet)
Meadway, Enfield

BREENS

GET IN TOUCH

020 8804 8989

enfield@breens.property

www.breens.property

VISIT US

557- 559 Hertford Road, Enfield, EN3 5UQ

These particulars are intended as a general guide and are believed to be correct, but their accuracy is not guaranteed and they do not form part of any offer or contract. All measurements are approximate and for guidance only. The Agent has not tested any apparatus, equipment, fixtures, fittings or services and cannot verify they are in working order or fit for purpose. Photographs are for illustration only and may depict items that are not for sale or included in the sale price. References to tenure are based on information supplied by the vendor; the Agent has not seen the title documents, and buyers should obtain verification from their solicitor or surveyor. Under the Money Laundering Regulations 2017, intending purchasers will be asked to produce identification and documentation at a later stage. These particulars are issued on the condition that all negotiations are conducted through Breens Estate Agents. Subject to contract and availability.