

Milton Street EN9

£399,995

FREEHOLD

 3 BEDROOMS

 1 BATHROOMS

 1 RECEPTIONS

Details

- THREE BEDROOMS
- END OF TERRACE
- GROUND FLOOR W/C
- FIRST FLOOR FAMILY BATHROOM
- SEPARATE OFF STREET PARKING AND GARAGE
- CHAIN FREE
- PROPERTY REQUIRES REDECORATION THROUGHOUT
- DOUBLE GLAZED
- REAR GARDEN APPROX 30FT.
- CLOSE TO WALTHAM ABBEY TOWN CENTER

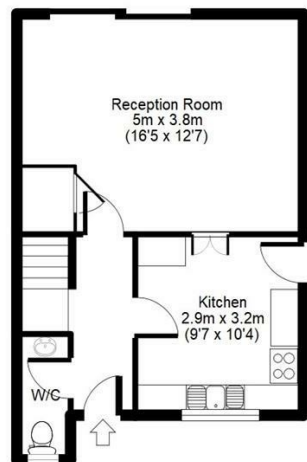
EPC RATING: 67 (D)
COUNCIL TAX: D

BREENS

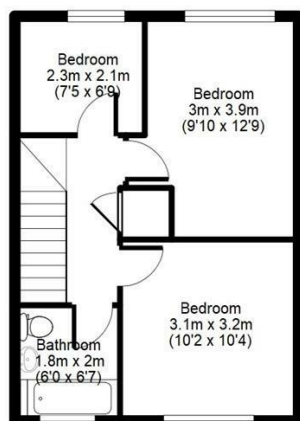


Milton Street, Waltham Abbey, EN9

APPROX GROSS INTERNAL FLOOR AREA: 763 sq. ft / 71 sq. m



Ground Floor



First Floor

For identification purposes only
Measurements are approx and not to scale



Contact Us

020 8804 8989

enfield@breens.property

www.breens.property

557- 559 Hertford Road, Enfield, EN3 5UQ

All sizes are approximate. The Agent has not tested any apparatus, equipment, fixtures and fittings, or services and so cannot verify that they are in working order or fit for the purpose. A buyer is advised to obtain verification from their Solicitors or Surveyor. Photographs are for illustration purposes only and may depict items, which are not for sale or included in the sale price. References to tenure of a property are based upon Information supplied by the vendor. The agent has not had sight of the title documents, a buyer is advised to obtain verification from their solicitor.

Money Laundering Regulations 2003: Intending purchasers will be asked to produce identification, documentation at a later stage and we would ask for your co-operation in order that there will be no delay in agreeing the sale. These particulars are intended to give a fair description of the property only and are in no way guaranteed, nor do of any contract. They are issued on the express condition that all negotiations are conducted through Breens Estate Agents. All subject to contract and to being unsold.