



BREENS

Guernsey House,

Enfield · EN3

ASKING PRICE

£150,000

LEASEHOLD



BREENS

THE HOME

Guernsey House, Eastfield

Enfield EN3

KEY FEATURES

- Lease: From 25 November 2002 to 31 March 2113 (87 Years Lease Remaining)
- Service Charge: £3873.24 Per Annum (Approximately)
- Ground Rent: £10.00 Per Annum (Approximately)
- One Bedroom
- Second Floor Apartment
- Spacious Throughout
- Shower Room
- Separate Kitchen
- Private Balcony Area
- Within Close Proximity To Albany Park And Local Amenities

EPC RATING

D

COUNCIL TAX BAND

A

1

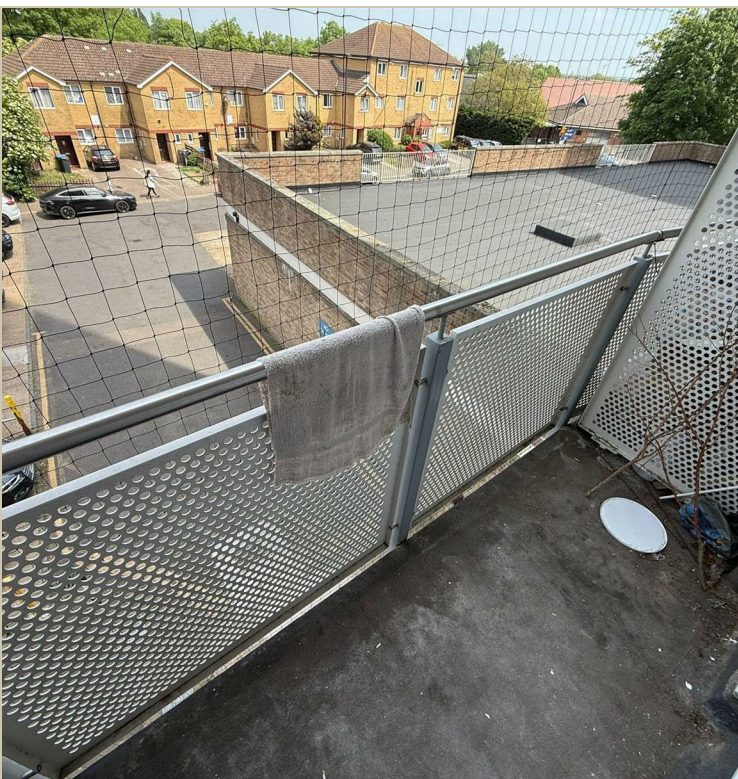
BEDROOMS

1

BATHROOMS

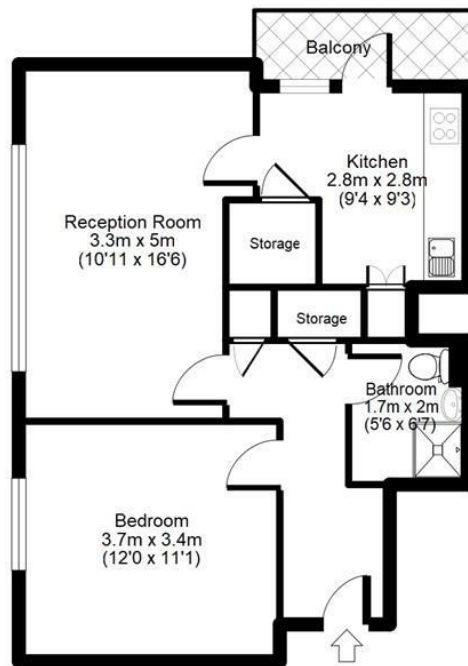
1

RECEPTIONS



Guernsey House, Enfield, EN3

APPROX GROSS INTERNAL FLOOR AREA: 518 sq. ft / 48 sq. m



For identification purposes only
Measurements are approximate and not to scale

BREENS

GET IN TOUCH

020 8804 8989

enfield@breens.property

www.breens.property

VISIT US

**557- 559 Hertford Road, Enfield, EN3
5UQ**

These particulars are intended as a general guide and are believed to be correct, but their accuracy is not guaranteed and they do not form part of any offer or contract. All measurements are approximate and for guidance only. The Agent has not tested any apparatus, equipment, fixtures, fittings or services and cannot verify they are in working order or fit for purpose. Photographs are for illustration only and may depict items that are not for sale or included in the sale price. References to tenure are based on information supplied by the vendor; the Agent has not seen the title documents, and buyers should obtain verification from their solicitor or surveyor. Under the Money Laundering Regulations 2017, intending purchasers will be asked to produce identification and documentation at a later stage. These particulars are issued on the condition that all negotiations are conducted through Breens Estate Agents. Subject to contract and availability.